

Catalogue
SUMMER
2020



Bicycle-Line

For many cycling enthusiasts, 1987 is the year of Stephen Roche, the Irish rider who was able to win the Giro, the Tour de France and World Championships in the same year, a feat which only the great Eddy Merckx was able to achieve. For us it is also the year Bicycle Line was born, which started its history in cycling thanks to the passion and experience of its founder, Gastone Coghetto. Today, 30 years later, with the contribution of the new generations, this story continues and points to new and important goals.

The research into new fabrics and technologies, the ever-expanding study of ergonomic dynamics and the ongoing collaboration with athletes of various levels to identify their different needs, represent the strengths of Bicycle Line to offer cycling apparel that can improve performance with resolute Italian style and design.

From the R&D lab to the style office, from tailoring to production, from garment control to final packaging, Bicycle Line manages the whole production chain, ensuring the quality and reliability needed for technical clothes that meet the chief requirements of lightness, breathability, endurance, comfort and aerodynamics.

“In the end, it’s through this process that we find the answers. Each collection is just a stage for us. Every goal is just an intermediate sprint. Our escape that started in 1987 is still ongoing. We know we can count on a solid team and a group that follows and supports us: our customers.”

Spring —Summer

Man

| | | | |
|-------------|--------------------------|----|-----------------------|
| Line Rekord | | | Liegi bibshorts |
| 8 | Popolarissima s/s | 30 | Liegi shorts |
| 9 | Pordoi s/s | | Liegi bibshorts ¾ |
| 10 | Comando bibshorts | 31 | Passo bibshorts |
| 11 | Zoncolan RS bibshorts | | Passo shorts |
| Line Veloce | | | Line Off road |
| 14 | Treviso s/s | 34 | Katena s/s |
| 15 | Treviso bibshorts | 35 | Brake s/s |
| 16 | Pro-S s/s | 36 | Rayon s/s |
| 17 | Aero 3.0 s/s | 37 | Tirreno baggy shorts |
| 18 | Aero 3.0 sleeveless | 38 | Ostiglia baggy shorts |
| 19 | Aero 3.0 l/s | 39 | Trophy baggy shorts |
| 20 | Universo bibshorts | | |
| 21 | Universo shorts | | |
| Line Corsa | | | |
| 24 | Tre Valli s/s | | |
| 25 | Tre Valli — Lana Merinos | | |
| 26 | Cortina DT s/s | | |
| 27 | Rodeo s/s | | |
| 28 | Squadra bibshorts | | |
| | Anima XP bibshorts | | |
| 29 | Anima XP shorts | | |

365

Man

| | |
|-------------|--------------------------|
| Line Rekord | |
| 100 | Normandia s/s |
| 102 | Normandia l/s |
| 103 | Normandia wind vest |
| 104 | Normandia wind j |
| 105 | Normandia bibshorts |
| | Normandia bibshorts ¾ |
| Line Veloce | |
| 108 | Pro-S l/s |
| 109 | Bretagna bibshorts ¾ |
| 110 | Aero 3.0 l/s desmontable |
| Line Corsa | |
| 114 | Fiandre l/s |
| 115 | Fiandre wind vest |
| 116 | Fiandre wind j |
| 117 | Fiandre bibshorts |
| | Fiandre bibshorts ¾ |

Fall —Winter

Man

| | |
|-------------|---------------------------|
| Line Rekord | |
| 148 | Normandia thermal j |
| 149 | Normandia bib tights |
| | Normandia wind bib tights |
| Line Veloce | |
| 152 | 3.0 thermal j |
| 153 | Bretagna bib tights |
| Line Corsa | |
| 156 | Fiandre thermal j |
| 158 | Fiandre bib tights |
| | Fiandre wind bib tights |
| 159 | Fiandre tights |
| | Fiandre bib tights no pad |

Woman

| | | | |
|-------------|-------------------|----------------|----------------------|
| Line Rekord | | Freccia tights | |
| 42 | Ninfea s/s | 63 | Freccia shorts |
| 43 | Ninfea sleeveless | | Freccia shorts ¾ |
| 44 | Karol s/s | 64 | Emblema shorts |
| 45 | Karol sleeveless | | Emblema shorts |
| 46 | Monza s/s | | |
| 47 | Poetica tank top | | Line Off road |
| 48 | Volata bibshorts | 68 | Dafne s/s |
| | Alyson bibshorts | 69 | Dalia s/s |
| 49 | Alyson shorts | 70 | Edera s/s |
| | Alyson shorts ¾ | 71 | Edera sleeveless |
| | | 72 | Intense baggy shorts |
| | | 73 | Imola baggy shorts |
| Line Veloce | | | |
| 52 | Tracy s/s | | |
| 53 | Tracy l/s | | |
| 54 | Thea s/s | | |
| 55 | Sole shorts | | |
| Line Corsa | | | |
| 58 | Mitica s/s | | |
| 59 | Euphoria s/s | | |
| 60 | Arya s/s | | |
| 61 | Dhea shorts | | |
| 62 | Freccia bibshorts | | |

Accessories

| | | | |
|----|------------------|----|----------------------|
| 84 | Miglia socks | 76 | Aero 3.0 s/s |
| | Gruppo 3.0 socks | 77 | Shiro s/s |
| 85 | Tandem socks | 78 | Sven shorts |
| | Tre Valli socks | 79 | Passo K shorts |
| 86 | Trofeo socks | 80 | Riviera baggy shorts |
| | Utopia socks | 81 | Aero 2.0 K gloves |
| 87 | Velox socks | | |
| | Risposta socks | | |
| 88 | Distanza socks | | |
| | Nives socks | | |
| 89 | Galassia socks | | |
| | Strada gloves | | |
| 90 | Pavé gloves | | |
| | Passista gloves | | |
| 91 | Terra gloves | | |
| | Cross gloves | | |
| 92 | Discesa gloves | | |
| | Guida gloves | | |
| 93 | Prologo bandana | | |
| | Prologo headband | | |
| 94 | Rampa bandana | | |
| | Amiata arm w | | |
| 95 | Amiata leg w | | |
| | Frame arm w | | |

Woman

| | |
|--------------------|-----------------------|
| Line Rekord | |
| 120 | Normandia s/s |
| 122 | Normandia l/s |
| 123 | Normandia wind vest |
| 124 | Normandia wind j |
| 125 | Normandia bibshorts |
| | Normandia bibshorts ¾ |
| Line Veloce | |
| 128 | Passione l/s |
| Line Corsa | |
| 132 | Logique l/s |
| 133 | Logique wind vest |
| 134 | Logique wind j |

Accessories

| | |
|-----|---------------------|
| 138 | Iron s/s |
| | Iron sleeveless |
| | Trama s/s |
| | Trama sleeveless |
| 139 | Segreto shorts |
| | Serra neck w |
| 140 | Normandia arm w |
| | Normandia leg w |
| | Normandia knee w |
| 141 | Fiandre arm w |
| | Fiandre leg w |
| | Fiandre knee w |
| 142 | Bretagna arm w |
| 143 | Tir H technical bib |

Woman

| | |
|--------------------|--------------------------|
| Line Rekord | |
| 162 | Normandia thermal j |
| 163 | Normandia bib tights |
| 164 | Normandia bib tights |
| 165 | Normandia tights |
| Line Veloce | |
| 168 | Passione thermal j |
| 169 | Passione tights |
| Line Corsa | |
| 172 | Arya thermal j |
| 174 | Logique bib tights |
| | Logique windproof tights |
| 175 | Logique tights |

Accessories

| | |
|-----|----------------------|
| 178 | Brusson l/s |
| | Busson l/s windproof |
| | Busson s/s |
| 179 | Traccia socks |
| | Carovana socks |
| 180 | Esperienza socks |
| | Iridato gloves |
| 181 | Alpha gloves |
| | Abbaglio gloves |
| 182 | Facile gloves |
| | Pista skull cap |
| | Manche mask |
| | Scia skull cap |
| 183 | Tornante skull cap |
| | Gara balaclava |
| 184 | Vittoria headband |
| | Atmosfera shoe cover |
| | Impresa shoe cover |
| 185 | Londra shoe cover |
| | Axel toe cover |

LINE ***SPRING SUMMER***





**SPRING
SUMMER
2020**



LINE REKORD

A line studied for the most demanding riders.
Performing materials, a very anatomical fitting,
advanced technical solutions, a minimal weight and
a great aerodynamics.



MAN

SPRING
SUMMER
2020

Popolarissima

BL44766

Short-sleeved jersey

011 grey

Size

S-XXXL

Breathability

Fitting

Performance

Temperature (more than +20°)

Elasticity

Fabric

- Sensitive Plus fabric
- Super light, soft next to the skin and excellent wicking properties
- Total UPF protection (50+)

Technical features

- YKK® Vislon CamLock zipper, full length
- Raw-cut back bottom with bonded silicone elastic band
- Bonded finish on the front
- Reinforced pockets seams
- Top zipper garages for comfort and to eliminate zipper bites

- Enhanced rear pockets, made more spacious, with three compartments
- Reflective logos to increase visibility to keep you safe
- Slim V-neck
- Slightly longer sleeves for enhanced aerodynamics
- Laser cut at the bottom of the sleeves with tape PU finishing
- Innovative mesh printed panel on the back with bonded seams for extra ventilation

001 black

003 red



006 blue



Pordoi XP

BL44819

Short-sleeved jersey

003 red

Size
S—XXXL

Breathability

Fitting Performance

Temperature (more than +20°)

Elasticity

Fabric

- Breathable front fabric with hexagonal structure for optimal elasticity
- Net fabric on the sides to increase elasticity and ventilation
- Elastic and non-deformable fabric on the sleeves
- Back with light and breathable fabric
- UPF protection (30+)

- Reinforced pockets seams
- Top zip garage to ensure maximum comfort and to prevent zipper bites
- 3 open cargo pockets for easy access to essentials and one zipper pocket
- Anatomical neck-cut
- Slightly longer sleeves to increase aerodynamics
- Raw cut sleeves
- Reflective elements to increase visibility to keep you safe

Technical features

- YKK® vislon Camlock zip, full length
- Heat-sealed front bottom without seams for more comfort



001 black

006 blue



Comando

BL44784

Bib shorts

001 black

Size
S—XXXL

Breathability
— — — — —

Elasticity
— — — — —

Temperature (more than +20°)
-6° — — — — — +20°

- Fabric
- Fenix fabric 180 gr/m²
 - High compression fabric reduces the lactic acid, to have better performances
 - Total UPF protection (50+)
 - Sleek lay flat laser cut bib straps made in stabilized Lycra® with micro openings to improve breathability
 - Minimize seams so that the fabric distributes compression throughout the leg
 - Soft yarns to increase the comfort on the skin

- Road Performance Space pad (p. 187)
- It has an innovative structure featuring a multidirectional curvature that delivers prefect fit and great stability in saddle
 - HCS (Hybrid Cell System). This system enable to get a pad significantly thinner and lighter than gel, and also radically more breathable and resistant to wear and tear
 - Fabric: Eit Carbonium Flash
 - Density: 200 kg/m³ (perineal insert)
 - Extra-long distances: more than 7 hours

- Technical features
- Raw-cut leg with inner silicone printing
 - Reflective elements to increase visibility to keep you safe



Zoncolan RS

BL44832

Bib shorts

001 black

Size
S—XXXL

Breathability

Elasticity

Temperature (more than +20°)

-6° +20°

Fabric

- Premium Fit 190 gr / m² high compression fabric
- Schoeller fabric with aerodynamic surface to reduce air friction
- Breathable mesh-bibs on the back
- Total UPF protection (50+)

7 hours

Technical features

- Flatlock seams
- Elastic band with non-slip silicone on the bottom of the leg in comfortable microfiber
- TY bibs with elastic flat microfiber fabric on the front and mesh fabric on the back
- Reflective elements to increase visibility to keep you safe

Polster Brest Gel (p. 189)

- Perforated foam with 3 mm openings to promote transpiration and the passage of air in the pad
- Perineal area: open cell foams with 90 Kg / m³ density + antishock gel inserts
- Long distances: more than





LINE VELOCE

Technical line with a colored and dynamic design,
suitable for most of the riders.

A technical, breathable and quality fabric,
comfortable pads, advanced technical solutions,
anatomical fitting, even if not extreme.



MAN

SPRING
SUMMER
2020

Treviso

BL44768

Short-sleeved jersey

009 black / fluo yellow

Size
S—XXXL

Breathability

Fitting Action

Temperature (more than +20°)

Elasticity

Fabric

- Full Moon (MITI) fabric in the front and sleeves and sides
- Dual-T fabric rear panel with Hydrofit technology and Sanitized® finish
- UPF protection (30+)

Technical features

- YKK® Cam Lock zipper, full length
- Silicone gripper at bottom keeps the jersey in place
- Three open cargo pockets for easy access to essentials
- Reflective elements to increase visibility to keep you safe



033 black / fluo light blue



025 black / fluo orange



002 black / white



Treviso

BL44769

Bib shorts

Size
S—XXXL

Elasticity

Breathability

Temperature (more than +20°)

-6° +20°

Fabric

- Top Gear Mititech Power fabric 225gr/m²
- Total UPF protection (50+)
- Perforated lie-flat bib straps offer a combination of excellent support, comfort and ventilation

Falcon Gel pad (p. 188)

- Carving System Technology provides lightness and breathability - thanks to the absence of the bonding film between the foams - and extremely elasticity.
- Fabric: Touch
- Different foam thicknesses

with Rooted Gel supporting main key pressure points and efficiently reducing micro vibrations

- Density: 90 Kg/m³ + rooted gel (perineal insert)
- Medium/long distances: more than 5 hours

Technical features

- Reflective logos in front and back to increase visibility to keep you safe
- Silicone band elastic on bottom leg

033 black / fluo light blue



025 black / fluo orange



002 black / white



009 black / fluo yellow



Veloce

Man

Spring—Summer

Pro-S

BL44820

Short-sleeved jersey

Size
S-XXXL

Breathability

Fitting Performance

Temperature (more than +20°)

-6° +20°

Elasticity

Fabric

- Breathable front and sides fabric with hexagonal structure for optimal elasticity
- Elastic and non-deformable fabric on the sleeves
- Back with light and comfortable fabric
- UPF protection (30+)

- maximum comfort and to prevent zipper bites
- 3 open cargo pockets for easy access to essentials and one zipper pocket
- Anatomical neck-cut
- Slightly longer sleeves to increase aerodynamics
- Reflective elements to increase visibility to keep you safe

Technical features

- YKK® Camlock covered zip, full length
- Raw cut sleeves
- Silicone gripper at bottom keeps the jersey in place
- Reinforced pockets seams
- Top zip garage to ensure

033 fluo light blue



025 fluo orange



012 anthracite



002 white



003 red



009 fluo yellow



Aero 3.0

BL44818

Short-sleeved jersey

Size
S—XXXL

Fitting Performance

Elasticity

Fabric

- Light and breathable main fabric
- Breathable and elastic micro-mesh fabric on the sleeves and on the sides
- UPF protection (30+) on the back

Breathability

Temperature (more than +20°)

-6° +20°

Technical features

- YKK® Camlock zip, full length
- Reinforced pockets seams
- Silicone gripper at bottom keeps the jersey in place
- Three open cargo pockets for easy access to essentials
- Slightly longer sleeves to increase aerodynamics
- Reflective elements to increase visibility to keep you safe

009 fluo yellow



002 white



003 red



033 fluo light blue



024 fluo green



Aero 3.0

BL44823

Sleeveless jersey

003 red

Size
S—XXXL

Breathability

Fitting Performance

Temperature (more than +20°)

-6° +20°

Elasticity

Fabric

- Light and breathable main fabric
- Breathable and elastic micro-mesh fabric on the sleeves and on the sides
- UPF protection (30+) on the back

Technical features

- YKK® Camlock zip, full length
- Reinforced pockets seams
- Silicone gripper at bottom keeps the jersey in place
- Three open cargo pockets for easy access to essentials
- Elastic band on armholes to reduce air flow
- Reflective elements to increase visibility to keep you safe



002 white

009 fluo yellow



033 fluo light blue

024 fluo green



Aero 3.0

BL44822

Long-sleeved jersey

Size
S—XXXL

Fitting Performance

Elasticity

- Fabric
- Comfortable and breathable main fabric
 - Fabric on sleeves and sides and pocket in elastic and wrapping material
 - UPF protection (30+)

Breathability

Temperature (more than +20°)

-6° +20°

- Technical features
- Ykk Camlock zip, full length
 - Silicone gripper at bottom keeps the jersey in place
 - Three open cargo pockets for easy access to essentials
 - Cuffs in comfortable elastic material for greater protection from the air
 - Reflective elements to increase visibility to keep you safe

003 red



033 fluo light blue



009 fluo yellow



Veloce

Man

Spring—Summer

Universo

BL44821

Bib shorts

Size
S-XXXL

Elasticity

Breathability

Temperature (more than +20°)

-6° +20°

Fabric

- Elastic and compressive Thunder Bike Power fabric on the main part with high resistance to pilling and abrasion
- Schoeller fabric with aerodynamic surface to reduce air friction
- Breathable mesh fabric on the back with antibacterial treatment
- Total UPF protection (50+)

Polster Brest Gel (p. 189)

- Perforated foam with 3 mm openings to promote transpiration and the passage of air in the back
- Perineal area: open cell

foams with 90 Kg / m3 density + antishock gel inserts

- Long distances: more than 7 hours

Technical features

- Flatlock seams
- Elastic band with open and breathable structure with non-slip silicone on the bottom of the leg
- TY bibs with flat microfiber elastic fabric on the front and mesh fabric on the back
- Reflective elements to increase visibility to keep you safe

033 fluo light blue

025 fluo orange



024 fluo green

001 black



003 red



009 fluo yellow



Universo

BL44861

Shorts

Size
S-XXXL

Elasticity

Breathability

Temperature (more than +20°)

-6° +20°

Fabric

- Elastic and compressive Thunder Bike Power fabric on the main part with high resistance to pilling and abrasion
- Schoeller fabric with aerodynamic surface to reduce air friction
- Total UPF protection (50+)

Polster Brest Gel (p. 189)

- Perforated foam with 3 mm openings to promote transpiration and the passage of air in the back
- Perineal area: open cell foams with 90 Kg / m3

density + antishock gel inserts

- Long distances: more than 7 hours

Technical features

- Flatlock seams
- Elastic band with open and breathable structure with non-slip silicone on the bottom of the leg
- Elastic waist 3 cm. comfortable and able to guarantee an excellent hold over time
- Reflective elements to increase visibility to keep you safe

003 red



025 fluo orange



024 fluo green



009 fluo yellow



033 fluo light blue



001 black



Veloce

Man

Spring—Summer



LINE CORSA

Entry line with some technical attributes,
but it gives priority
to comfort, harmonious design and a
classical, timeless style.

It's suitable both for intensive trainings
and Sunday rides.



MAN

SPRING
SUMMER
2020

Tre Valli

BL44767

Short-sleeved jersey

035 bordeaux

Size
S—XXXL

Breathability

| <u>Fitting</u> | Action |
|----------------|--------|
|----------------|--------|

Temperature (more than +20°)

Elasticity

Fabric

- Full Moon (MITI) fabric on the front and side panels
- Dual-T fabric rear panel with Hydrofit technology and Sanitized® finish
- UPF protection (30+) on the back
- Slightly longer sleeves for enhanced aerodynamics
- Raw-cut cuff sleeves with inner light silicone printing

Technical features

- YKK® Vislon Cam Lock covered zipper, full lenght
- Silicone gripper at bottom keeps the jersey in place
- Enhanced rear pockets, made more spacious, with three compartments
- Slim V-neck
- Reflective elements to increase visibility to keep you safe



001 black

006 blue



Tre Valli — Lana Merinos

BL44774

Short-sleeved jersey

035 bordeaux

Size
S—XXXL

Breathability

Fitting Action

Temperature (more than +20°)

Elasticity

Fabric

- Merinos Plus Scotland fabric
- UPF protection (30+)
- Optimized thermal insulation and a pleasant natural touch
- Rich in finest Merino wool fibers: naturally breathable and antibacterial, high wicking and odour resistant
- Slightly longer sleeves for enhanced aerodynamics

Technical features

- YKK® Vislon Cam Lock covered zipper, full length
- Silicone gripper at bottom keeps the jersey in place
- Enhanced rear pockets, made more spacious, with three compartments
- Slim V-neck
- Reflective elements to increase visibility to keep you safe



001 black



| Spring—Summer | Man | Corsa |
|---------------|-----|-------|
|---------------|-----|-------|

Cortina DT

BL44776

Short-sleeved jersey

001 black

Size
S—XXXL

Breathability

Fitting Action

Temperature (more than +20°)

Elasticity

Fabric

- Full Moon (MITI) fabric on the front
- Dual-T fabric rear panel with Hydrofit technology and Sanitized® finish
- UPF protection (30+) on the back
- Raw-cut cuff sleeves with inner light silicone printing

Technical features

- YKK® Cam Lock covered zipper, full length
- Slightly longer sleeves for enhanced aerodynamics
- Silicone gripper at bottom keeps the jersey in place
- Three open cargo pockets for easy access to essentials
- Reflective elements to increase visibility to keep you safe



002 white

011 grey



030 avio blue



Rodeo

BL44826

Short-sleeved jersey

006 blue

Size
S—XXXL

Breathability

| <u>Fitting</u> | Action |
|--------------------------------|--------------------------------|
| 1. <u>Identify</u> the problem | 1. <u>Identify</u> the problem |
| 2. <u>Define</u> the problem | 2. <u>Define</u> the problem |
| 3. <u>Collect</u> data | 3. <u>Collect</u> data |
| 4. <u>Analyze</u> data | 4. <u>Analyze</u> data |
| 5. <u>Interpret</u> data | 5. <u>Interpret</u> data |
| 6. <u>Communicate</u> results | 6. <u>Communicate</u> results |
| 7. <u>Evaluate</u> results | 7. <u>Evaluate</u> results |
| 8. <u>Revise</u> results | 8. <u>Revise</u> results |
| 9. <u>Present</u> results | 9. <u>Present</u> results |
| 10. <u>Conclude</u> results | 10. <u>Conclude</u> results |

Temperature (more than +20°)

Elasticity

Fabric

- Soft and breathable ecological Native fabric
- Native eco fabric with micromesh structure

Technical features

- YKK® Camlock covered zip, full length
- Doubled sleeves bottom for optimal bike comfort
- Silicone gripper at bottom keeps the jersey in place
- Reinforced pockets seams
- 3 open cargo pockets for easy access to essentials
- Slightly longer sleeves to increase aerodynamics
- Reflective elements to increase visibility to keep you safe

002 white

001 black

038 safari yellow



Squadra

BL44780 Bib shorts

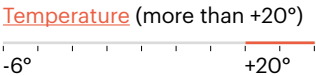
Size
S—XXXL

Elasticity

- Fabric
- Premium Feel fabric 140 gr/m². Ultra compression structure
 - Excellent elastic memory, natural hand feel, it fits the body like a second skin
 - UPF protection (50+)
 - Lie-flat bib straps
 - Breathable elastic mesh on the back

- Road Performance Space pad (p. 187)
- It has an innovative structure featuring a multidirectional curvature that delivers perfect fit and great stability in saddle
 - HCS (Hybrid Cell System). This system enable to get a pad significantly thinner and lighter than gel, and also

Breathability



- radically more breathable and resistant to wear and tear
- Fabric: Eit Carbonium Flash
- Density: 200 kg/m³ (perineal insert)
- Extra-long distances: more than 7 hours

- Technical features
- Elastic band with inner silicone
 - Minimize seams so that the fabric distributes compression throughout the leg
 - Soft yarns to increase the comfort on the skin
 - Reflective elements to increase visibility to keep you safe

001 black



Anima XP

BI44833 Bib shorts

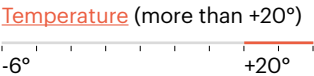
Size
S—XXXL

Elasticity

- Fabric
- Ecological compressive and comfortable MITI Green Soul fabric in the central part
 - MITI GREEN Soul mesh fabric on bibs to increase breathability
 - Total UPF protection (50+)

- Polster Brest Gel (p. 189)
- Perforated foam with 3 mm openings to promote transpiration and the passage of air in the back
 - Perineal area: open cell foams with 90 Kg / m3 density + antishock gel inserts
 - Long distances: more than 7 hours

Breathability



- Technical features
- Flatlock seams
 - Elastic band with non-slip silicone on the bottom of the leg in comfortable microfiber
 - TY bibs with flat microfiber elastic fabric on the front and mesh fabric on the back
 - Reflective elements to increase visibility to keep you safe

001 black



Anima XP

BL44854

Shorts

Size
S—XXXL

Elasticity

Fabric

- Ecological compressive and comfortable MITI Green soul fabric in the central part
- Total UPF protection (50+)

Polster Brest Gel (p. 189)

- Perforated foam with 3 mm openings to promote transpiration and the passage of air in the back
- Perineal area: open cell foams with 90 Kg / m³ density + antishock gel inserts
- Long distances: more than 7 hours

Breathability

Temperature (more than +20°)

-6° +20°

Technical features

- Flatlock seams
- Elastic band with non-slip silicone on the bottom of the leg in comfortable microfiber
- Elastic waist 3 cm. comfortable and able to guarantee an excellent hold over time
- Reflective elements to increase visibility to keep you safe

001 black



Liegi

BL44622

Bib shorts

Size
S—XXXL

Elasticity

Fabric

- Performer (MITI) Lycra® Sport fabric 210 gr/m²
- Great elasticity and muscle support
- High breathable fabric
- Total UPF protection (50+)
- Breathable mesh bibs

Power Plus pad (p. 188)

- Carving System Technology provides lightness and breathability - thanks to the absence of the bonding film between the foams - and extremely elasticity

Breathability

Temperature (more than +20°)

-6° +20°

Technical features

- Fabric: Elite
- Density: 90 Kg/m³ (perineal insert)
- Medium distances: more than 3 hours
- Reflective logos to increase visibility to keep you safe
- Silicone gripper on bottom leg
- Flatlock seams

001 black

006 blue



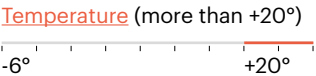
Liegi

BL44623 Shorts

Size
S—XXXL

Breathability

Elasticity



- Fabric**
- Performer (MITI) Lycra® Sport fabric 210 gr/m²
 - Great elasticity and muscle support
 - High breathable fabric
 - Total UPF protection (50+)

- Technical features**
- Reflective logos to increase visibility to keep you safe
 - Silicone gripper on bottom leg
 - Flatlock seams

- Power Plus pad (p. 188)**
- Carving System Technology provides lightness and breathability - thanks to the absence of the bonding film between the foams - and extremely elasticity
 - Fabric: Elite
 - Density: 90 Kg/m³ (perineal insert)
 - Medium distances: more than 3 hours

001 black

006 blue



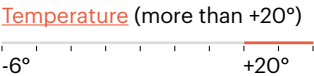
Liegi

BL44624 ¾ Bib shorts

Size
S—XXXL

Breathability

Elasticity



- Fabric**
- Performer (MITI) Lycra® Sport fabric 210 gr/m²
 - Great elasticity and muscle support
 - High breathable fabric
 - Total UPF protection (50+)
 - Breathable mesh bibs

- Density: 90 Kg/m³ (perineal insert)
- Medium distances: more than 3 hours

- Power Plus pad (p. 188)**
- Carving System Technology provides lightness and breathability - thanks to the absence of the bonding film between the foams - and extremely elasticity.
 - Fabric: Elite

- Technical features**
- Reflective logos to increase visibility to keep you safe
 - Silicone gripper on bottom leg
 - Flatlock seams

001 black



Passo

BL44631 Bib shorts

Size
S-XXXL

Elasticity

Breathability

Temperature (more than +20°)

- Fabric
- MITI fabric 190gr.
 - Great elasticity and muscle support
 - High breathable fabric
 - Total UPF protection (50+)
 - Breathable mesh bibs

- Power Plus pad (p. 188)
- Carving System Technology provides lightness and breathability - thanks to the absence of the bonding film between the foams - and extremely elasticity.
 - Fabric: Elite
 - Density: 90 Kg/m³ (perineal insert)

- Medium distances: more than 3 hours
- Technical features
- Reflective logos to increase visibility to keep you safe
 - Silicone gripper on bottom leg

001 black



Passo

BL44632 Shorts

Size
S-XXXL

Elasticity

Breathability

Temperature (more than +20°)

- Fabric
- MITI fabric 190gr.
 - Great elasticity and muscle support
 - High breathable fabric
 - Total UPF protection (50+)

- Power Plus pad (p. 188)
- Carving System Technology provides lightness and breathability - thanks to the absence of the bonding film between the foams - and extremely elasticity.
 - Fabric: Elite
 - Density: 90 Kg/m³ (perineal insert)

- Medium distances: more than 3 hours
- Technical features
- Reflective logos to increase visibility to keep you safe
 - Silicone gripper on bottom leg

001 black





LINE **OFF ROAD**

A complete line studied specially for MTB. Technical fabric and relax fitting give freedom of movement, comfort and freshness.

A colored and cool design, a complete accessories line are a must for each free rider.



MAN

**SPRING
SUMMER
2020**

Katena

BL44834

Short-sleeved jersey

001 black

Size
S—XXXL

Breathability

Fitting Comfort

Temperature (more than +20°)

Elasticity

Fabric

- Skin fabric characterized by a breathable and comfortable 3D structure
- Fabric on sleeves in elastic and wrapping material
- UPF protection (30+)

Technical features

- Non-slip silicone on the back jersey bottom
- 20 cm short front zip YKK
- Zipped rear pocket
- 2 additional side opened pockets
- Loose fit
- Reflective elements to increase visibility to keep you safe



062 white / green

058 red / black



056 white / red

006 blue



Brake

BL44848

Short-sleeved jersey

066 black/orange

Size

S-XXXL

Breathability

Fitting

Comfort

Temperature (more than +20°)

-6°

 $+20^\circ$

Elasticity

Fabric

- Skin fabric characterized by a breathable and comfortable 3D structure
- UPF protection (30+)

Technical features

- 20 cm short front zip YKK
- Zipped rear pocket
- Loose fit
- Reflective elements to increase visibility to keep you safe



003 red



016 green



005 light blue



018 dark green



Off road

Man

Spring—Summer

Rayon

BL44846

Short-sleeved jersey

053 black / fluo yellow

Size
S—XXXL

Breathability

Fitting Comfort

Temperature (more than +20°)

Elasticity

Fabric

- Comfortable and breathable main fabric
- Breathable micro-mesh fabric on the sides
- UPF protection (30+)

Technical features

- 20 cm short front zip YKK®
- Reflective elements to increase visibility to keep you safe
- 3 open cargo pockets for easy access to essentials and one zipper pocket
- Loose fit
- Non-slip silicone on the back jersey bottom



058 black / red

066 black / orange



018 dark green

092 avio blue



Tirreno

BL44838

Baggy shorts

001 black

Size
S—XXXL

Breathability

Fitting Comfort

Temperature (more than +20°)

Elasticity

Fabric

- Soft and bielastic fabric to increase movement freedom
- Breathable mesh fabric at waist and pocket to accelerate moisture transfer
- Total UPF protection (50+)

Technical features

- Snap button closure and zippered fly
- 2 zipped pockets on the sides
- Velcro side-adjuster tabs ensure a perfect fit
- Reflective elements to increase visibility to keep you safe
- Longer leg



Ostiglia

BL44773

Baggy shorts

001 black

Size

S-XXXL

Breathability

Elasticity

Temperature (more than +20°)

-6°

 $+20^{\circ}$

Fabric

- Soft and bielastic fabric to increase movement freedom
- Breathable mesh fabric at waist and pocket to accelerate moisture transfer
- Total UPF protection (50+)

Technical features

- Snap button closure and zippered fly
- One zipped and two cargo pockets
- Velcro side-adjuster tabs ensure a perfect fit
- Reflective elements to increase visibility to keep you safe



003 red



005 light blue



016 green



018 dark green



030 avio blue



Trophy

BL44698

Baggy shorts

001 black

Size
S—XXXL

Breathability

Elasticity

Temperature (more than +20°)

-6°

 $+20^\circ$

Fabric

- Soft and bielastic fabric to increase movement freedom
- Breathable mesh fabric at waist and pocket to accelerate moisture transfer
- Total UPF protection (50+)

Technical features

- Snap button closure and zippered fly
- 2 zipped and 2 opened cargo pockets
- 2 zips for extra ventilation
- Key-hook in the left pocket
- Velcro side-adjuster tabs ensure a perfect fit
- Reflective elements to increase visibility to keep you safe





LINE REKORD

A line studied for the most demanding riders.
Performing materials, a very anatomical fitting,
advanced technical solutions, a minimal weight and
a great aerodynamics.



WOMAN
SPRING
SUMMER
2020

Ninfea

BL44787

Short-sleeved jersey

001 black

Size

XS—XL

Breathability

Temperature (more than +20°)

-6° +20°

Fitting

Action

Elasticity

Fabric

- Carezza Microsense Soft fabric
- Mesh fabric under the arms light and breathable
- Total UPF protection (50+)
- Raw-cut cuff sleeves with inner light silicone printing

Technical features

- YKK® Cam Lock zipper, full lenght
- Slightly longer sleeves for enhanced aerodynamics
- Three open cargo pockets for easy access to essentials plus one zipped
- Silicone gripper at bottom keeps the jersey in place
- Reflective elements to increase visibility to keep you safe



015 purple

027 turquoise



Ninfea

BL44789

Sleeveless jersey

001 black

Size

XS—XL

Breathability

Temperature (more than +20°)

-6° +20°

Fitting

Action

Elasticity

Fabric

- Carezza Microsense Soft fabric
- Mesh fabric under the arms light and breathable
- Total UPF protection (50+)

Technical features

- Three open cargo pockets for easy access to essentials plus one zipped
- Silicone gripper at bottom keeps the jersey in place
- Reflective elements to increase visibility to keep you safe



015 purple

027 turquoise



Karol

BL44850

Short-sleeved jersey

Size

XS—XL

Fitting

Performance

Elasticity

Fabric

- Nair microfibre main fabric that offers excellent coverage and elegance
- Native eco fabric with micromesh structure on the sides

Breathability

Temperature (more than +20°)

-6° +20°

Technical features

- YKK® vislon Camlock zip, full length
- 3 open cargo pockets for easy access to essentials and one zipper pocket
- Silicone gripper at bottom keeps the jersey in place
- Seamless sleeves bottom
- Anatomical neck-cut
- Reflective elements to increase visibility to keep you safe

014 fuchsia



027 turquoise



054 black / white



001 black



Karol

BL44851

Sleeveless jersey

Size

XS—XL

Fitting

Performance

Elasticity

Fabric

- Nair microfibre main fabric that offers excellent coverage and elegance
- Native eco fabric with micromesh structure on the sides

Breathability

Temperature (more than +20°)

-6° +20°

Technical features

- Ykk vislon Camlock zip, full length
- 3 open cargo pockets for easy access to essentials and one zipper pocket
- Silicone gripper at bottom keeps the jersey in place
- Elastic band on armholes to reduce air flow
- Anatomical neck-cut
- Reflective elements to increase visibility to keep you safe

027 turquoise



054 black / white



001 black



014 fuchsia



Monza

BL44782

Short-sleeved jersey

001 black

Size

XS—XL

Breathability

Temperature (more than +20°)

-6° +20°

Fitting

Performance

Elasticity

Fabric

- Asteria Interpower (MITI) fabric on the shoulders
- Full Moon (MITI) fabric on the front
- Super light, soft next to the skin and excellent wicking properties
- UPF protection (30+)

Technical features

- YKK® CamLock covered zipper, full lenght
- Enhanced rear pockets, made more spacious, with three compartments
- Raw-cut back bottom with bonded silicone elastic band

- Raw-cut at the bottom of the sleeves with inner light silicone band
- Bonded finish on the front
- Reinforced pockets seams
- Reflective logos to increase visibility to keep you safe
- Slim V-neck
- Slightly longer sleeves for enhanced aerodynamics
- Innovative mesh printed panel on the back with bonded seams for extra ventilation



014 fuchsia

018 dark green



Poetica

BL44642

Tank top

001 black

Size

XS—XL

Breathability

Fitting

Action

Temperature (more than +20°)

-6°

 $+20^\circ$

Elasticity

Fabric

- Mangrovia fabric (MITI)
- Total UPF protection (50+)
- Antibacterial Sanitized[®] treatment

Technical features

- One zipped cargo pocket
- Double lightweight braces
- Breathable micro-mesh panels on sides to offer optimal cooling effect
- Silicone gripper at bottom keeps the jersey in place
- Reflective elements to increase visibility to keep you safe



054 black / white



Volata

BL44790 Bib shorts

Size
XS—XL

Breathability

Elasticity

Temperature (more than +20°)
-6° _____ +20°

- Fabric**

 - Zaffiro Lycra® Sport (MITI) fabric with Coldblack finishing. 200gr/m²
 - High abrasion resistance and muscle compression
 - Total UPF protection (50+)
 - Breathable mesh bibs
- radically more breathable and resistant to wear and tear

 - Fabric: Eit Carbonium Flash
 - Density: 200 kg/m³ (perineal insert)
 - Extra-long distances: more than 7 hours

- Road Performance Space pad (p. 184)**

 - It has an innovative structure featuring a multidirectional curvature that delivers perfect fit and great stability in saddle HCS (Hybrid Cell System). This system enable to get a pad significantly thinner and lighter than gel, and also
- Technical features**

 - Flatlock minimised seams
 - Construction with minimised seams in the front
 - Elastic band with inner silicone printing
 - Reflective elements to increase visibility to keep you safe

001 black



Alyson

BL44857 Bib shorts

Size
XS—XL

Breathability

Elasticity

Temperature (more than +20°)
-6° _____ +20°

- Fabric**

 - Premium Fit 190 gr / m² high compression fabric
 - Breathable mesh-bibs on the back
 - Total UPF protection (50+)
- Polster Brest Gel (p. 190)**

 - Perforated foam with 3 mm openings to promote transpiration and the passage of air in the pad
 - Perineal area: open cell foams with 90 Kg / m3 density + antishock gel inserts
 - Long distances: more than 7 hours
- Technical features**

 - Flatlock seams
 - Elastic band with non-slip silicone on the bottom of the leg in comfortable microfiber
 - TY bibs with elastic flat microfiber fabric on the front and mesh fabric on the back
 - Reflective elements to increase visibility to keep you safe

001 black



Alyson

BL44855 Shorts

Size
XS—XL

Breathability

Elasticity

Temperature (more than +20°)
_____ -6° +20°

- Fabric
- Premium Fit 190 gr / m² high compression fabric
 - Total UPF protection (50+)

- Polster Brest Gel (p. 190)
- Perforated foam with 3 mm openings to promote transpiration and the passage of air in the pad
 - Perineal area: open cell foams with 90 Kg / m³ density + antishock gel inserts
 - Long distances: more than 7 hours

- Technical features
- Flatlock seams
 - Elastic band with non-slip silicone on the bottom of the leg in comfortable microfiber
 - More comfortable and elastic V5 waist panel construction
 - Reflective elements to increase visibility to keep you safe

001 black



Alyson

BL44856 ¾ Shorts

Size
XS—XL

Breathability

Elasticity

Temperature (more than +20°)
_____ -6° +20°

- Fabric
- Premium Fit 190 gr / m² high compression fabric
 - Total UPF protection (50+)

- Polster Brest Gel (p. 190)
- Perforated foam with 3 mm openings to promote transpiration and the passage of air in the pad
 - Perineal area: open cell foams with 90 Kg / m³ density + antishock gel inserts
 - Long distances: more than 7 hours

- Technical features
- Flatlock seams
 - Elastic band with non-slip silicone on the bottom of the leg in comfortable microfiber
 - More comfortable and elastic V5 waist panel construction
 - Reflective elements to increase visibility to keep you safe

001 black





LINE VELOCE

Technical line with a colored and dynamic design,
suitable for most of the riders.

A technical, breathable and quality fabric,
comfortable pads, advanced technical solutions,
anatomical fitting, even if not extreme.



WOMAN
SPRING
SUMMER
2020

Tracy

BL44842

Short-sleeved jersey

015 purple

Size

XS—XL

Breathability

Temperature (more than +20°)

-6° +20°

Fitting

Action

Elasticity

Fabric

- Light and breathable main fabric
- Breathable and elastic micro-mesh fabric on the sleeves and on the sides
- UPF protection (30+) on the back

Technical features

- YKK® Camlock covered zip, full length
- Reinforced pockets seams
- Silicone gripper at bottom keeps the jersey in place
- Three open cargo pockets for easy access to essentials
- Slightly longer sleeves to increase aerodynamics
- Reflective elements to increase visibility to keep you safe
- Raw cut sleeves



002 white

027 turquoise



001 black



BL44843

027 turquoise

Breathability

Temperature (più di +20°)

Elasticity

Fabric

- Comfortable and breathable main fabric
- Fabric on sleeves and sides and pocket in elastic and wrapping material
- UPF protection (30+)

Technical features

- **YKK®** Camlock covered zip, full length
- Silicone gripper at bottom keeps the jersey in place
- Three open cargo pockets for easy access to essentials
- Cuffs in comfortable elastic material for greater protection from the air
- Reflective elements to increase visibility to keep you safe

001 black



Thea

BL44847

Short-sleeved jersey

014 fuchsia

Size

XS—XL

Breathability

Temperature (more than +20°)

-6° +20°

Elasticity

Fabric

- Elastic and breathable Full Moon M.I.T.I. fabric on the front and the pockets
- Breathable and comfortable fabric on the back panel
- Native eco fabric with micromesh structure on sleeves and sides
- UPF protection (30+)

Technical features

- YKK® Camlock covered zip, full length
- Elastic band with silicone on sleeves
- Silicone gripper at bottom keeps the jersey in place
- Reinforced pockets seams
- 3 open cargo pockets for easy access to essentials
- Anatomical neck-cut
- Slightly longer sleeves to increase aerodynamics
- Reflective elements to increase visibility to keep you safe



001 black

027 turquoise



Sole

BL44841

Shorts

Size

XS—XL

Elasticity

Fabric

- Elastic and compressive Thunder Bike Power fabric on the main part with high resistance to pilling and abrasion
- IN-FORMA fabric to increase elastic comfort
- Total UPF protection (50+)

Polster Brest pad (p. 189)

- Carving System Technology provides lightness and breathability - thanks to the absence of the bonding film between the foams - and extremely elasticity.
- Fabric: Touch
- Different foam thicknesses with Rooted Gel supporting

Breathability

Temperature (more than +20°)

-6° +20°

- main key pressure points and efficiently reducing micro vibrations
- Density: 90 Kg/m³ + rooted gel (perineal insert)
- Medium/long distances: more than 5 hours

Technical features

- Flatlock seams
- More comfortable and elastic V5 waist panel construction
- Elastic band with breathable structure with non-slip silicone on the bottom of the leg
- Reflective elements to increase visibility to keep you safe

014 fuchsia



002 white



027 turquoise





LINE **CORSA**

Entry line with some technical attributes, but it gives priority to comfort, harmonious design and a classical, timeless style.

It's suitable both for intensive trainings and Sunday rides.



WOMAN
**SPRING
SUMMER
2020**

Mitica

BL44781

Short-sleeved jersey

001 black

Size
XS—XL

Breathability

Fitting Action

Temperature (more than +20°)

Elasticity

Fabric

- Full Moon (MITI) fabric on the front
- Dual-T fabric rear panel with Hydrofit technology and Sanitized® finish
- UPF protection (30+) on the back
- Slightly longer sleeves for enhanced aerodynamics
- Raw-cut cuff sleeves with inner light silicone printing

Technical features

- YKK® Cam Lock covered zipper, full length
- Silicone gripper at bottom keeps the jersey in place
- Three open cargo pockets for easy access to essentials
- Reflective elements to increase visibility to keep you safe



002 white



006 blue



011 grey



015 purple



Euphoria

BL44824

Short-sleeved jersey

Size

XS—XL

Fitting

Action

Elasticity

Fabric

- Soft and breathable ecological Native fabric
- Native eco fabric with micromesh structure

Breathability

Temperature (more than +20°)

-6° +20°

Technical features

- YKK® Camlock covered zip, full length
- Doubled sleeves bottom for optimal bike comfort
- Silicone gripper at bottom keeps the jersey in place
- Reinforced pockets seams
- 3 open cargo pockets for easy access to essentials
- Slightly longer sleeves to increase aerodynamics
- Reflective elements to increase visibility to keep you safe

001 black



015 purple



018 dark green



Size

XS—XL

Breathability

Temperature (more than +20°)

-6° +20°

Fitting

Action

Elasticity

Fabric

- Elastic and breathable Full Moon M.I.T.I. fabric on the main part
- Embossed fabric on sleeves to ensure comfort and aerodynamics

Technical features

- YKK® Camlock covered zip, full length
- Elastic band with silicone on sleeves
- Silicone gripper at bottom keeps the jersey in place
- Reflective elements to increase visibility to keep you safe
- 3 open cargo pockets for easy access to essentials
- Anatomical neck-cut
- Slightly longer sleeves to increase aerodynamics



054 white / black

088 white / turquoise



014 fuchsia



Dhea

BL44858

Shorts

001 black

Size

XS—XL

Breathability

Elasticity

Temperature (more than +20°)

-6° +20°

Fabric

- Ecological compressive and comfortable MITI Green Soul fabric in the main part
- Total UPF protection (50+)

Brest pad (p.185)

- Perforated foam with 3 mm openings to promote transpiration and the passage of air in the back
- Perineal area: open cell foams with 90 Kg / m3 density + antishock gel inserts
- Long distances: more than 7 hours

Technical features

- Flatlock seams
- Elastic band with non-slip silicone on the bottom of the leg in comfortable microfiber
- More comfortable and elastic V5 waist panel construction
- Reflective elements to increase visibility to keep you safe



Freccia

BL44645 Bib shorts

Size
XS—XL

Breathability

Elasticity

Temperature (more than +20°)
-6° +20°

- Fabric
- Performer (MITI) Lycra® Sport fabric 210 gr/m²
 - Great elasticity and muscle support
 - High breathable fabric
 - Total UPF protection (50+)
 - Breathable mesh bibs

- Fabric: Elite
- Density: 90 Kg/m³ (perineal insert)
- Medium distances: more than 3 hours

- Technical features
- Reflective logos to increase visibility to keep you safe
 - Silicone gripper on bottom leg
 - Flatlock seams

- Power Plus pad (p. 188)
- Carving System Technology provides lightness and breathability - thanks to the absence of the bonding film between the foams - and extremely elasticity

Freccia

BL44646 Tights

Size
XS—XL

Breathability

Elasticity

Temperature (from +10° to +23°)
-6° +20°

- Fabric
- Performer (MITI) Lycra® Sport fabric 210 gr/m²
 - Great elasticity and muscle support
 - High breathable fabric
 - Total UPF protection (50+)

- Medium distances: more than 3 hours

- Technical features
- Reflective logos to increase low visibility to keep you safe
 - Silicone gripper on bottom leg
 - Flatlock seams

- Power Plus pad (p. 188)
- Carving System Technology provides lightness and breathability - thanks to the absence of the bonding film between the foams - and extremely elasticity
 - Fabric: Elite
 - Density: 90 Kg/m³ (perineal insert)

001 black

001 black



Freccia

BL44634 Shorts

Size
XS—XL

Breathability

Elasticity

Temperature (more than +20°)
_____ -6° +20°

- Fabric**
- Performer (MITI) Lycra® Sport fabric 210 gr/m²
 - Great elasticity and muscle support
 - High breathable fabric
 - Total UPF protection (50+)

- Medium distances: more than 3 hours
- Technical features**
- Reflective logos to increase visibility to keep you safe
 - Silicone gripper on bottom leg
 - Flatlock seams

- Power Plus pad (p. 188)**
- Carving System Technology provides lightness and breathability - thanks to the absence of the bonding film between the foams - and extremely elasticity
 - Fabric: Elite
 - Density: 90 Kg/m³ (perineal insert)

001 black

Freccia

BL44635 ¾ Shorts

Size
XS—XL

Breathability

Elasticity

Temperature (more than +20°)
_____ -6° +20°

- Fabric**
- Performer (MITI) Lycra® Sport fabric 210 gr/m²
 - Great elasticity and muscle support
 - High breathable fabric
 - Total UPF protection (50+)

- Medium distances: more than 3 hours
- Technical features**
- Reflective logos to increase visibility to keep you safe
 - Silicone gripper on bottom leg
 - Flatlock seams

- Power Plus pad (p. 188)**
- Carving System Technology provides lightness and breathability - thanks to the absence of the bonding film between the foams - and extremely elasticity
 - Fabric: Elite
 - Density: 90 Kg/m³ (perineal insert)

001 black



Emblema

BL44633 Shorts

Size
XS—XL

Breathability

Elasticity

Temperature (more than +20°)
_____ -6° +20°

- Fabric**
- (MITI) fabric 190gr.
 - Great elasticity and muscle support
 - High breathable fabric
 - Total UPF protection (50+)

- Medium distances: more than 3 hours
- Technical features**
- Reflective logos to increase visibility to keep you safe
 - Silicone gripper on bottom leg

- Power Plus pad (p. 188)**
- Carving System Technology provides lightness and breathability - thanks to the absence of the bonding film between the foams - and extremely elasticity
 - Fabric: Elite
 - Density: 90 Kg/m³ (perineal insert)

001 black



Emblema

BL44731 Shorts

Size
XS—XL

Breathability

Elasticity

Temperature (more than +20°)
_____ -6° +20°

- Fabric**
- (MITI) fabric 190gr.
 - Great elasticity and muscle support
 - High breathable fabric
 - Total UPF protection (50+)

- Medium distances: more than 3 hours
- Technical features**
- Reflective logos to increase visibility to keep you safe
 - Silicone gripper on bottom leg
 - Short leg

- Power Plus pad (p. 188)**
- Carving System Technology provides lightness and breathability - thanks to the absence of the bonding film between the foams - and extremely elasticity
 - Fabric: Elite
 - Density: 90 Kg/m³ (perineal insert)

001 black







LINE **OFF ROAD**

A complete line studied specially for MTB. Technical fabric and relax fitting give freedom of movement, comfort and freshness.

A colored and cool design, a complete accessories line are a must for each free rider.



WOMAN
**SPRING
SUMMER
2020**

Dafne

BL44852

Short-sleeved jersey

015 purple

Size

XS—XL

Breathability

Temperature (more than +20°)

-6° +20°

Fitting

Comfort

Elasticity

Fabric

- Skin fabric characterized by a breathable and comfortable 3D structure
- UPF protection (30+)

Technical features

- 20 cm short front zip YKK®
- Zipped rear pocket
- Loose fit
- Reflective elements to increase visibility to keep you safe



016 green

027 turquoise



001 black



Dalia

BL44825

Short-sleeved jersey

015 purple

Size

XS—XL

Breathability

Temperature (more than +20°)

-6° +20°

Elasticity

Fabric

- Skin fabric characterized by a breathable and comfortable 3D structure
- UPF protection (30+)

Technical features

- 20 cm short front zip YKK®
- Zipped rear pocket
- Loose fit
- Reflective elements to increase visibility to keep you safe

001 black

027 turquoise



Off road

Woman

Spring—Summer

Edera

BL44830

Short-sleeved jersey

058 black / red

Size

XS—XL

Breathability

Temperature (more than +20°)

-6° +20°

Fitting

Comfort

Elasticity

Fabric

- Skin fabric characterized by a breathable and comfortable 3D structure
- Fabric on sleeves in elastic and wrapping material
- Breathable micro-mesh fabric on the sides
- UPF protection (30+)

Technical features

- 20 cm short front zip YKK®
- Reflective elements to increase visibility to keep you safe
- 3 open cargo pockets for easy access to essentials
- Loose fit



006 blue

054 black / white



066 black / orange

052 black / fuchsia



Edera

BL44831

Sleeveless jersey

058 black / red

Size

XS—XL

Breathability

Temperature (more than +20°)

-6° +20°

Fitting

Comfort

Elasticity

Fabric

- Skin fabric characterized by a breathable and comfortable 3D structure
- Breathable micro-mesh fabric on the sides
- UPF protection (30+)

Technical features

- 12 cm short front zip YKK®
- 2 open cargo pockets for easy access to essentials
- Reflective elements to increase visibility to keep you safe



006 blue

054 black / white



066 black / orange

052 black / fuchsia



Off road

Woman

Spring—Summer

Intense

BL44699

Baggy shorts

001 black

Size

XS—XL

Breathability

Temperature (more than +20°)

-6° +20°

Elasticity

Fabric

- Soft and bielastic fabric to increase movement freedom
- Breathable mesh fabric at waist and pocket to accelerate moisture transfer
- Total UPF protection (50+)

Technical features

- Snap button closure and zippered fly
- 2 zipped and 2 opened cargo pockets
- 2 zips for extra ventilation
- Key-hook in the left pocket
- Velcro side-adjuster tabs ensure a perfect fit
- Reflective elements to increase visibility to keep you safe



Imola

BL44775

Baggy shorts

Size

XS—XL

Elasticity

Fabric

- Soft and bielastic fabric to increase movement freedom
- Breathable mesh fabric at waist and pocket to accelerate moisture transfer
- Total UPF protection (50+)

Breathability

Temperature (more than +20°)

-6° +20°

Technical features

- Snap button closure and zippered fly
- One Zipped and two cargo pockets
- Velcro side-adjuster tabs ensure a perfect fit
- Reflective elements to increase visibility to keep you safe

014 fuchsia



015 purple



016 green



027 turquoise



003 red



001 black



Off road

Woman

Spring—Summer

LINE KIDS



KIDS

**SPRING
SUMMER
2020**

Aero 3.0

BL44844

Short-sleeved jersey

Size

116, 128, 140, 152, 164

Fitting

Comfort

Elasticity

Fabric

- Fabric with open and breathable structure
- UPF protection (30+)

Breathability

Temperature (more than +20°)

-6° +20°

Technical features

- 20 cm short front zip YKK
- Reflective elements to increase visibility to keep you safe
- 3 open cargo pockets for easy access to essentials
- Covered elastic band on the bottom

009 fluo yellow



023 fuchsia fluo

024 green fluo



Shiro

BL44853

Short-sleeved jersey

003 red

Size
116, 128, 140, 152, 164

Fitting Comfort

Elasticity

- Fabric**
- Fabric with open and breathable structure
 - UPF protection (30+)

Breathability

Temperature (more than +20°)

- Technical features**
- 20 cm short front zip YKK®
 - Reflective elements to increase visibility to keep you safe
 - 3 open cargo pockets for easy access to essentials
 - Covered elastic band on the bottom

005 light blue

056 white / red



Kids

Spring—Summer

Sven

BL44845

Shorts

Size

116, 128, 140, 152, 164

Elasticity

Breathability

Temperature (more than +20°)

-6° +20°

Fabric

- Elastic and comfortable
- 190 gr MITI fabric
- Carvico polyester printed fabric
- Total UPF protection (50+)

Superkid pad (p. 190)

- Carving System Technology provides lightness and breathability - thanks to the absence of the bonding film between the foams - and extremely elasticity
- Fabric features: Touch
- Density: 65 Kg/m³
- Medium distances: 2/3 hours

Technical features

- Elastic waist 3 cm. comfortable and able to guarantee an excellent hold over time
- Elastic silicone band on the bottom
- Reflective elements to increase visibility to keep you safe

005 light blue

023 fuchsia fluo



003 red



009 fluo yellow



Passo K

BL44739

Shorts

001 black

Size

116, 128, 140, 152, 164

Elasticity

Fabric

- MITI fabric 190gr.
- Total UPF protection (50+)

Superkid pad (p. 188)

- Carving System Technology provides lightness and breathability - thanks to the absence of the bonding film between the foams - and extremely elasticity
- Fabric features: Touch
- Density: 65 Kg/m³
- Medium distances: 2/3 hours

Breathability

Temperature (more than +20°)

-6° +20°

Technical features

- Elastic waistband
- Elastic gripper on bottom



Riviera

BL44840

Baggy Shorts

003 red

Size
116, 128, 140, 152, 164

Breathability

Elasticity

Temperature (more than +20°)
-6° +20°

- Fabric**
- Fabric with excellent resistance and high elasticity
 - Mesh fabric at the waist to speed traspiration
 - Total UPF protection (50+)

- Technical features**
- Zippered fly
 - 2 opened pockets on the sides
 - Velcro side-adjuster tabs ensure a perfect fit
 - Reflective elements to increase visibility to keep you safe



005 light blue

001 black



Aero 2.0 K

BL44730

Gloves

Size

S—M—L

Technical features

- 4-way stretch moisture-wicking upper fabric
- Palm with optimized padding
- Adjustable cuff strap
- Easy removal system
- Silicon printings

003 red



001 black



023 fuchsia fluo



009 fluo yellow



Kids

Spring—Summer



LINE **ACCESSORIES**

ACCESSORIES

**SPRING
SUMMER
2020**



Miglia

BL44673
Man socks

Sizes

S (38—40), M (41—43),
L (44—46)

Features

- Cuff 18 cm
- Summer season

Technicity

- Antibacterial treatment
- Meryl® Skinlife
- Breathable mesh construction
- Elastic cuff
- Socks with elastic fibers to keep the foot stable

002 white



001 black



Gruppo 3.0

BL44860
Man socks

Sizes

S (38—40), M (41—43),
L (44—46)

Features

- Cuff 13 cm
- Summer season

Technicity

- Antibacterial treatment
- Meryl® Skinlife
- Breathable mesh construction
- Elastic cuff
- Socks with elastic fibers to keep the foot stable

002 white



009 fluo yellow



006 blue



001 black



098 black / fantasy



Tandem

BL44329
Man socks

Sizes

S (38—40), M (41—43),
L (44—46)

Features

- Cuff 9 cm
- Summer season

Technicity

- Antibacterial treatment
- Meryl® Skinlife
- Breathable mesh construction
- Elastic cuff
- Socks with elastic fibers to keep the foot stable
- Imperceptible toe seams

001 black



002 white



003 red



008 fluo yellow



011 grey



024 fluo green



025 fluo orange



030 avio blue



033 fluo light blue



Tre valli

BL44777
Man socks

Sizes

S (38—40), M (41—43),
L (44—46)

Features

- Cuff 13 cm
- Summer season

Technicity

- Antibacterial treatment
- Meryl® Skinlife
- Breathable mesh construction
- Elastic cuff
- Socks with elastic fibers to keep the foot stable
- Imperceptible toe seams

001 black



006 blue



035 bordeaux



Trofeo

BL44682
Man socks

Sizes

S (38—40), M (41—43),
L (44—46)

Features

- Invisible socks
- Summer season

Technicity

- Antibacterial treatment
- Meryl® Skinlife
- Breathable mesh construction
- Socks with elastic fibers to keep the foot stable
- Imperceptible toe seams

002 white



009 fluo yellow



030 blue avio



001 black



Utopia

BL44792
Man socks

Sizes

S (38—40), M (41—43),
L (44—46)

Features

- Cuff 13 cm
- Summer season

Technicity

- Antibacterial treatment
- Meryl® Skinlife
- Breathable mesh construction
- Elastic cuff
- Socks with elastic fibers to keep the foot stable
- Imperceptible toe seams

053 black /
fluo yellow
(lines & squares)



090 black / orange
(rhombus)



056 white / red
(rhombus)



051 black / green
(lines & squares)



058 black / red
(rhombus)



Velox

BL44859
Socks

Sizes

XS (35—37), S (38—40),
M (41—43)

Features

- Cuff 18 cm
- Summer season

Technicity

- Antibacterial treatment
- Meryl® Skinlife
- Breathable mesh construction
- Elastic cuff
- Socks with elastic fibers to keep the foot stable
- Imperceptible toe seams

002 white



001 black



Risposta

BL44675
Woman socks

Sizes

XS (35—37), S (38—40),
M (41—43)

Features

- Cuff 9 cm
- Summer season

Technicity

- Antibacterial treatment
- Meryl® Skinlife
- Breathable mesh construction
- Elastic cuff
- Socks with elastic fibers to keep the foot stable
- Imperceptible toe seams

001 black



015 white \ purple



088 white /
turquoise



098 black fantasy



100 turquoise
fantasy



099 white fantasy



014 white / raspberry



101 fuchsia fantasy



Distanza

BL44677
Woman socks

- Sizes**
XS (35—37), S (38—40),
M (41—43)
- Features**
— Invisible socks
— Summer season
- Technicity**
— Antibacterial treatment
— Meryl® Skinlife
— Breathable mesh
construction
— Socks with elastic fibers
to keep the foot stable
— Imperceptible toe seams



001 black



027 turquoise



Nives

BL44866
Woman socks

- Sizes**
XS (35—37), S (38—40),
M (41—43)
- Features**
— Cuff 9 cm
— Summer season
- Technicity**
— Antibacterial treatment
— Meryl® Skinlife
— Breathable mesh
construction
— Socks with elastic fibers
to keep the foot stable
— Imperceptible toe seams



001 black



Galassia

BL44676
Woman socks

Sizes
XS (35—37), S (38—40),
M (41—43)

Features
— Cuff 6 cm
— Summer season

Technicity
— Antibacterial treatment
— Meryl® Skinlife
— Breathable mesh
construction
— Elastic cuff
— Socks with elastic fibers
to keep the foot stable
— Imperceptible toe seams

001 black



002 white



015 purple



027 turquoise



098 black fantasy



099 white fantasy



Strada

BL44711
Man gloves

Sizes
S—XXL

Features
— Ergonomic road gloves for
maximun performance
— 4-way stretch moisture-
wicking upper fabric
— Synthetic suede palm with
non-slip silicone
— Silicone gripping on the
wrist
— Long wrist with silicon
gripper in the edge
— Palm with optimized
padding
— Easy removal system

002 white



001 black



058 black / red



Pavé

BL44712
Man gloves

Sizes
S—XXL

Features

- 4-way stretch moisture-wicking upper fabric
- Synthetic palms with silicone prints
- Terry thumb to wipe off the sweat
- Carpal tunnel protection with gel inserts
- Adjustable cuff strap
- Easy removal system
- Silicon printings

002 white



003 red



009 fluo yellow



001 black



033 light blue



Passista

BL44713
Man gloves

Sizes
S—XXL

Features

- 4-way stretch moisture-wicking upper fabric
- Synthetic palms with silicone prints
- Carpal tunnel protection with gel inserts
- Terry thumb to wipe off the sweat
- Ventilation holes on the palm
- Adjustable cuff strap
- Easy removal system
- Reflective elements to keep you visible at all times

054 white / black



053 black / fluo yellow



058 black / red



001 black



089 black / fluo light blue



090 black / fluo orange



091 black / fluo green



092 black / blue avio



057 black / silver



Terra

BL44717
Man gloves

Sizes
S—XXL

Features

- Breathable mesh on upper section
- Palm with optimized padding
- Ventilation holes on the palm
- Adjustable velcro closure

001 black



009 fluo yellow



Cross

BL44718
Man gloves

Sizes
S—XXL

Features

- Breathable mesh on upper section
- Palm with optimized padding
- No slip reinforced palm for an excellent grip
- Adjustable velcro closure

001 black



Discesa

BL44719
Woman gloves

Sizes
XS—L

Features

- 4-way stretch moisture-wicking upper fabric
- Synthetic palm
- Carpal tunnel protection with gel inserts
- Terry thumb to wipe off the sweat
- Adjustable cuff strap
- Easy removal system
- Silicon printings

002 white



036 raspberry



015 purple



001 black



037 sea water



Guida

BL44720
Woman gloves

Sizes
XS—L

Features

- 4-way stretch moisture-wicking upper fabric
- Breathable palm
- Carpal tunnel protection with gel inserts
- Terry thumb to wipe off the sweat
- Adjustable cuff strap
- Easy removal system
- Silicon printings

001 black



002 white



015 purple



036 raspberry



037 sea water



Prologo

BL44743
Bandana

Sizes
One size

- Features
- Breathable and lightweight polyester fabric
 - Antibacterial finish
 - Sun and sweat protection
 - To wear under the helmet

003 red



005 light blue



009 fluo yellow



054 black / white



014 fuchsia



001 black



Prologo

BL44744
Headband

Sizes
One size

- Features
- Breathable and lightweight polyester fabric
 - Antibacterial finish
 - Sun and sweat protection
 - To wear under the helmet

001 black



002 white



003 red



009 fluo yellow



005 light blue



014 fuchsia



Rampa

BL44745
Bandana

Sizes
One size

Features

- Breathable and lightweight polyester fabric
- Antibacterial finish
- Sun and sweat protection
- To wear under the helmet

054 black /
whitefluo



056 white / red



090 black /
fluo orange



053 black / fluo yellow



Amiata

BL44740
Arm warmers

Sizes
XS—XXL

Features

- Excellent wicking properties
- Total UPF protection (+50)
- Imperceptible seams
- Raw cut hem
- Silicon elastic gripper
- Great elasticity and lightweight
- Decent thermal protection

001 black



002 white



Amiata

BL44742

Leg warmers

Sizes

XS—XXL

Features

- Excellent wicking properties
- Total UPF protection (+50)
- Imperceptible seams
- Raw cut hem
- Silicon elastic gripper
- Great elasticity and lightweight
- Decent thermal protection

001 black



002 white



Frame

BL44835

Arm warmers

Seamless

Sizes

XS—XXL

Features

- Excellent wicking properties
- Total UPF protection (+50)
- Imperceptible seams
- Raw cut hem
- Silicon elastic gripper
- Great elasticity and lightweight
- Decent thermal protection

001 black



LINE 365

The products in this section, due to their technical characteristics or materials, can be used throughout the year. The availability, therefore, extends for 365 days of the year.





**365
2020**



LINE REKORD

A line studied for the most demanding riders.
Performing materials, a very anatomical fitting,
advanced technical solutions, a minimal weight and
a great aerodynamics.



MAN

365
2020

Normandia

BL44625

Short-sleeved jersey

001 black

Size
S—XXXL

Breathability

Elasticity

Temperature (from +6° to +18°)
-6° +20°

- Fabric
- Windtex fabric 110 gr/m² on the front and sleeves
 - Waterproof and windproof membrane
 - Waterproofness: ≥ 10.000 mm
 - Breathability (Ret): ≤18/ m²Pa/W
 - Extremely elastic and soft fabric
 - Galibier fabric on the back. Brushed and breathable

- Technical features
- YKK® Vislon zipper with wind flap
 - Three open cargo pockets and one zipped
 - Drop tail
 - High Fleece lined collar
 - Silicone gripper at bottom keeps the jersey in place
 - Reflective elements to increase visibility to keep you safe
 - High-visibility pocket edges

009 fluo yellow





Normandia

BL44689

Long-sleeved jersey

Size

S—XXXL

Elasticity

Fabric

- Windtex fabric 110 gr/m² on the front and sleeves
- Waterproof and windproof membrane
- Waterproofness: ≥ 10.000 mm
- Breathability (Ret): ≤18/ m²Pa/W
- Extremely elastic and soft fabric
- Galibier fabric on the back. Brushed and breathable

Breathability

Temperature (from +6° to +18°)

-6° +20°

Technical features

- YKK® Vislon zipper with wind flap
- Three open cargo pockets and one zipped
- Drop tail
- High Fleece lined collar
- Silicone gripper at bottom keeps the jersey in place
- Reflective elements to increase visibility to keep you safe
- High-visibility pocket edges

009 fluo yellow



001 black



Normandia

BL44705

Windproof vest

Size
S—XXXL

Elasticity

Breathability

Temperature (from +6° to +18°)

-6° +20°

Fabric

- Windtex fabric 110 gr/m² on the front, high part of the back and on the bottom back
- Waterproof and windproof membrane
- Waterproofness: ≥ 10.000 mm
- Breathability (Ret): ≤18/ m²Pa/W
- Extremely elastic and soft fabric
- Rear micro sublimated mesh wicking fabric

Technical features

- YKK® zipper with wind flap
- Side zipped pocket
- Side opening to easily reach the pockets of the jersey underneath
- Silicone gripper at bottom keeps the vest in place
- Reflective elements to increase visibility to keep you safe

001 black



009 fluo yellow



Normandia

BL44557

Windproof jacket

001 black

Size
S—XXXL

Breathability

Elasticity

Temperature (from +6° to +18°)
-6° +20°

Fabric

- Windtex fabric 110 gr/m²
- Waterproof and windproof membrane
- Waterproofness: ≥ 10.000 mm
- Breathability (Ret): ≤18/m²Pa/W
- Extremely elastic and soft fabric

Technical features

- YKK® zipper with wind flap
- 2 zipped cargo pockets
- Silicone gripper at bottom keeps the jacket in place
- Reflective elements to increase visibility to keep you safe
- High-visibility pocket edges
- The jacket can be stored in the jersey pocket
- High Fleece lined collar



Normandia

BL44560 Bib shorts

Size
S—XXXL

Breathability

Elasticity

Temperature (from +6° to +18°)

- Fabric
- Superroubaix DWR M, water repellent fabric
 - Total UPF protection (50+)
 - Soft brushed inner fabric
 - Breathable mesh bibs

- Falcon Gel pad (p. 188)
- Carving System Technology provides lightness and breathability - thanks to the absence of the bonding film between the foams - and extremely elasticity.
 - Fabric: Touch
 - Different foam thicknesses with Rooted Gel supporting

- main key pressure points and efficiently reducing micro vibrations
- Density: 90 Kg/m³ + rooted gel (perineal insert)
 - Medium/long distances: more than 5 hours

- Technical features
- Flatlock seams
 - Silicone gripper on bottom leg
 - Reflective elements to increase visibility to keep you safe

001 black



Normandia

BL44561 ¾ Bib shorts

Size
S—XXXL

Breathability

Elasticity

Temperature (from +6° to +18°)

- Fabric
- Superroubaix DWR M, water repellent fabric
 - Total UPF protection (50+)
 - Soft brushed inner fabric
 - Breathable mesh bibs

- Falcon Gel pad (p. 188)
- Carving System Technology provides lightness and breathability - thanks to the absence of the bonding film between the foams - and extremely elasticity.
 - Fabric: Touch
 - Different foam thicknesses with Rooted Gel supporting

- main key pressure points and efficiently reducing micro vibrations
- Density: 90 Kg/m³ + rooted gel (perineal insert)
 - Medium/long distances: more than 5 hours

- Technical features
- 16 cm front zip
 - Flatlock seams
 - Silicone gripper on bottom leg
 - Reflective elements to increase visibility to keep you safe

001 black





LINE VELOCE

Technical line with a colored and dynamic design,
suitable for most of the riders.

A technical, breathable and quality fabric,
comfortable pads, advanced technical solutions,
anatomical fitting, even if not extreme.



MAN

365
2020

Pro-S

BL44876

Long-sleeved jersey

053 black / yellow

Size
S—XXXL

Breathability

Elasticity

Temperature (from +10° to +23°)

-6° +20°

Fabric

- Thermal, soft, elastic and enveloping M.I.T.I. fabric
- Soft brushed inner fabric
- Total UPF protection (50+)

Technical features

- YKK® Vislon zipper with wind flap
- Three open cargo pockets and one zipped
- Shape pockets for easy access to essentials
- Elastic fleece cuffs
- Silicone gripper at bottom keeps the jersey in place
- Reflective elements to increase visibility to keep you safe



057 black / anthracite



Bretagna

BL44671

¾ Bib shorts

001 black

Size
S—XXXL

Breathability

Elasticity

Temperature (from +3° to +14°)
-6° +20°

Fabric

- Lombardia thermal fabric
- Soft brushed inner fabric
- Total UPF protection (50+)
- Breathable mesh bibs

Road Performance Space pad (p. 187)

- It has an innovative structure featuring a multidirectional curvature that delivers prefect fit and great stability in saddle
- HCS (Hybrid Cell System). This system enable to get a pad significantly thinner and lighter than

- gel, and also radically more breathable and resistant to wear and tear
- Fabric: Eit Carbonium Flash
- Density: 200kg/m³ (perineal insert)
- Extra-long distances: more than 7 hours

Technical features

- Flatlock seams
- Silicone gripper on bottom leg
- Reflective elements to increase visibility to keep you safe



Aero 3.0

BL44863

Long-sleeved jersey
with removable sleeves

Size
S—XXXL

Elasticity

Breathability

Temperature (from +10° to +23°)

-6° +20°

Fabric

- Windtex Shield membrane in the front and on the long sleeves
- Back panel in polyester fabric with excellent wicking properties
- Pure antibacterial finish
- UPF protection (30+) on the back and on the front

Technical features

- YKK® zipper with wind flap
- Detachable sleeves to obtain a short sleeve jersey with windproof front protection
- Three open cargo pockets
- Silicone gripper at bottom keeps the jersey in place
- Reflective elements to increase visibility to keep you safe

009 fluo yellow



033 fluo light blue



012 anthracite



003 red







LINE CORSA

Entry line with some technical attributes, but it gives priority to comfort, harmonious design and a classical, timeless style.

It's suitable both for intensive trainings and Sunday rides.



MAN

365
2020

Fiandre

BL44704

Long-sleeved jersey

Size
S-XXXL

Elasticity

Breathability

Temperature (from +6° to +18°)

-6° +20°

Fabric

- Galibier Comfortable thermal fabric
- Soft brushed inner fabric
- Elastic fleece on bottom jersey to ensure excellent fitting
- Total UPF protection (50+)

Technical features

- YKK® covered zipper with wind flap
- Three open cargo pockets
- Silicone gripper at bottom keeps the jersey in place
- Elastic fleece cuffs
- Reflective elements to increase visibility to keep you safe

001 black



003 red



030 blue avio



Fiandre

BL44665

Windproof vest

009 fluo yellow

Size

S—XXXL

Breathability

Temperature (from +10° to +23°)

Windproof

Fabric

- Piumi fabric 45gr/m²
- Water repellent and windproof fabric in the front
- Breathable back, thanks to a micro mesh panel

Technical features

- Full front zipper with wind flap
- Lycra® tape at the bottom
- Reflective elements to increase visibility to keep you safe
- It can be stored in the jersey pocket
- Water-resistant lower portion to protect from tire-spray on wet roads



002 white



Fiandre

BL44664

Windproof jacket

Size

S—XXXL

Windproof

Fabric

- Piumi fabric 45gr/m²
- Water repellent and windproof fabric

Breathability

Temperature (from +10° to +23°)

-6° +20°

Technical features

- Full front zipper with wind flap
- Lycra® tape at the bottom
- Reflective elements to increase visibility to keep you safe
- It can be stored in the jersey pocket

002 white



009 fluo yellow



Fiandre

BL44649 Bibshorts

Size
S—XXXL

Windproof

Breathability

Temperature (from +3° to +14°)

- Fabric
- Lombardia thermal fabric
 - Soft brushed inner fabric
 - Total UPF protection (+50)
 - Breathable mesh bibs

- Power Plus pad (p. 188)
- Carving System Technology provides lightness and breathability - thanks to the absence of the bonding film between the foams - and extremely elasticity
 - Fabric: Elite
 - Density: 90 Kg/m³ (perineal insert)
 - Medium distances: more than 3 hours

- Technical features
- Silicone gripper on bottom leg
 - Reflective elements to increase visibility to keep you safe

001 black



Fiandre

BL44650 Bib shorts ¾

Size
S—XXXL

Windproof

Breathability

Temperature (from +3° to +14°)

- Fabric
- Lombardia thermal fabric
 - Soft brushed inner fabric
 - Total UPF protection (50+)
 - Breathable mesh bibs

- Power Plus pad (p. 188)
- Carving System Technology provides lightness and breathability - thanks to the absence of the bonding film between the foams - and extremely elasticity
 - Fabric: Elite
 - Density: 90 Kg/m³ (perineal insert)

- Medium distances: more than 3 hours
- Technical features
- Silicone gripper on bottom leg
 - Reflective elements to increase visibility to keep you safe

001 black





LINE REKORD

A line studied for the most demanding riders.
Performing materials, a very anatomical fitting,
advanced technical solutions, a minimal weight and
a great aerodynamics.



WOMAN

365
2020

Normandia

BL44687

Short-sleeved jersey

001 black

Size

XS—XL

Breathability

Temperature (from +6° to +18°)

-6° +20°

Elasticity

Fabric

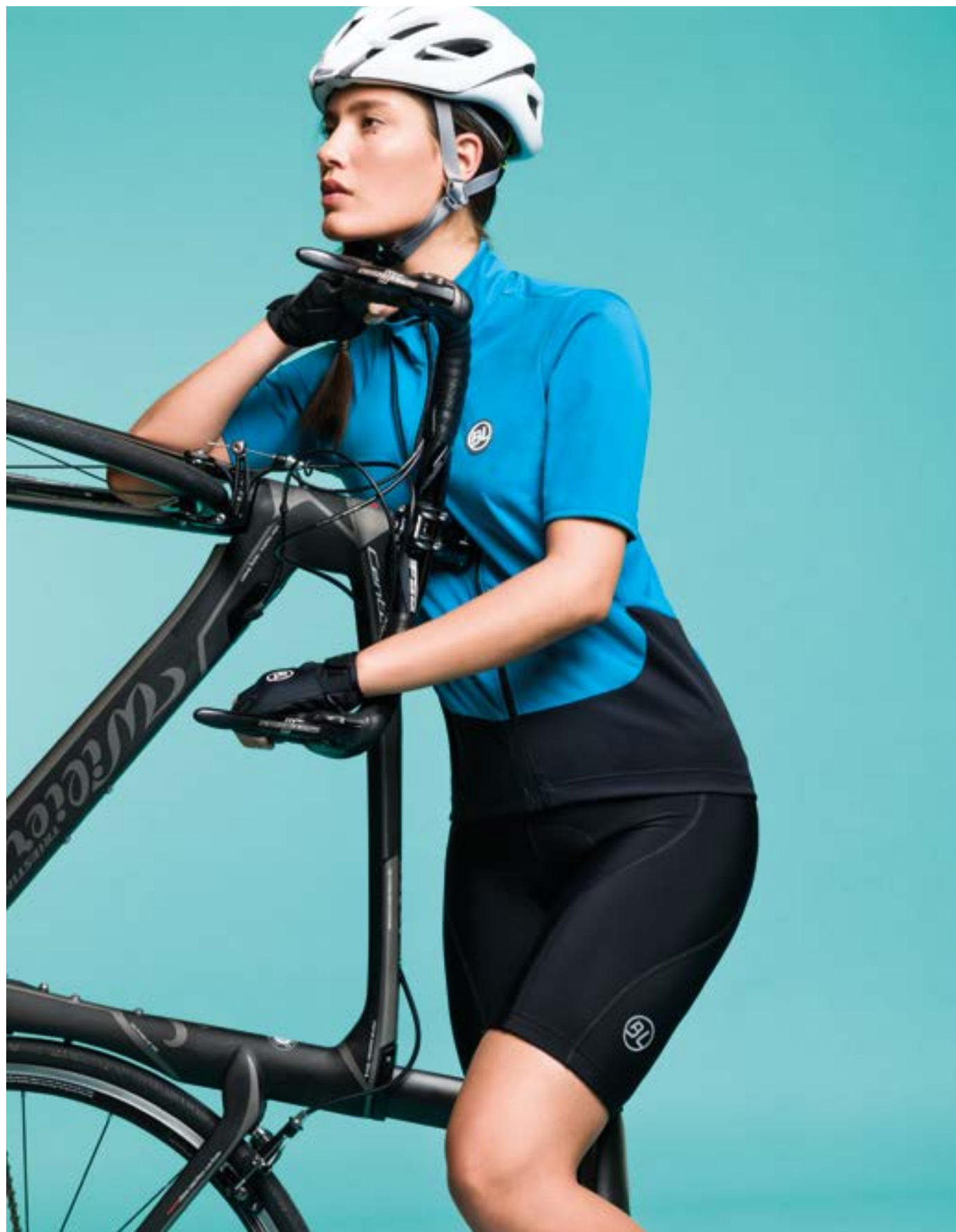
- Windtex fabric 110 gr/m² on the front and sleeves
- Waterproof and windproof membrane
- Waterproofness: ≥ 10.000 mm
- Breathability (Ret): ≤ 18/m²Pa/W
- Extremely elastic and soft fabric
- Galibier fabric on the back. Brushed and breathable

Technical features

- YKK® Vislon zipper with wind flap
- Three open cargo pockets and one zipped
- Drop tail
- High Fleece lined collar
- Silicone gripper at bottom keeps the jersey in place
- Reflective elements to increase visibility to keep you safe
- High-visibility pocket edges

027 turquoise





Normandia

BL44688

Long-sleeved jersey

Size

XS—XL

Elasticity

Fabric

- Windtex fabric 110 gr/m² on the front and sleeves
- Waterproof and windproof membrane
- Waterproofness: ≥ 10.000 mm
- Breathability (Ret): ≤ 18/m²Pa/W
- Extremely elastic and soft fabric
- Galibier fabric on the back. Brushed and breathable

Breathability

Temperature (from +6° to +18°)

-6° +20°

Technical features

- YKK® Vislon zipper with wind flap
- Three open cargo pockets and one zipped
- Drop tail
- High Fleece lined collar
- Silicone gripper at bottom keeps the jersey in place
- Reflective elements to increase visibility to keep you safe
- High-visibility pocket edges

001 black



027 turquoise



Normandia

BL44706

Windproof vest

001 black

Size

XS—XL

Breathability

Temperature (from +10° to +23°)

Elasticity

Fabric

- Windtex fabric 110 gr/m² on the front, high part of the back and on the bottom back
- Waterproof and windproof membrane
- Waterproofness: ≥ 10.000 mm
- Breathability (Ret): $\leq 18/m^2Pa/W$
- Extremely elastic and soft fabric
- Rear micro sublimated mesh wicking fabric

Technical features

- YKK® zipper with wind flap
- Side zipped pocket
- Side opening to easily reach the pockets of the jersey underneath
- Silicone gripper at bottom keeps the vest in place
- Reflective elements to increase visibility to keep you safe



Normandia

BL44558

Windproof jacket

001 black

Size

XS—XL

Breathability

Temperature (from +6° to +18°)

-6° +20°

Fabric

- Windtex fabric 110 gr/m²
- Waterproof and windproof membrane
- Waterproofness: ≥ 10.000 mm
- Breathability (Ret): $\leq 18/m^2Pa/W$
- Extremely elastic and soft fabric

Technical features

- YKK® zipper with wind flap
- Two zipped cargo pockets
- Silicone gripper at bottom keeps the jacket in place
- Reflective elements to increase visibility to keep you safe
- High-visibility pocket edges
- The jacket can be stored in the jersey pocket
- High Fleece lined collar



Normandia

BL44563 Bibshorts

Size
XS—XL

Breathability

Elasticity

Temperature (from +6° to +18°)

- Fabric
- Superroubaix DWR M, water repellent fabric
 - Total UPF protection (50+)
 - Soft brushed inner fabric
 - Breathable mesh bibs

- main key pressure points and efficiently reducing micro vibrations
- Density: 90 Kg/m³ + rooted gel (perineal insert)
 - Medium/long distances: more than 5 hours

- Falcon Gel pad (p. 188)
- Carving System Technology provides lightness and breathability - thanks to the absence of the bonding film between the foams - and extremely elasticity
 - Fabric: Touch
 - Different foam thicknesses with Rooted Gel supporting

- Technical features
- Flatlock seams
 - Silicone gripper on bottom leg
 - Reflective elements to increase visibility to keep you safe

001 black



Normandia

BL44564 Bib shorts ¾

Size
XS—XL

Breathability

Elasticity

Temperature (from +3° to +14°)

- Fabric
- Superroubaix DWR M, water repellent fabric
 - Total UPF protection (50+)
 - Soft brushed inner fabric
 - Breathable mesh bibs

- and efficiently reducing micro vibrations
- Density: 90 Kg/m³ + rooted gel (perineal insert)
 - Medium/long distances: more than 5 hours

- Falcon Gel pad (p. 188)
- Carving System Technology provides lightness and breathability - thanks to the absence of the bonding film between the foams - and extremely elasticity
 - Fabric: Touch
 - Different foam thicknesses with Rooted Gel supporting main key pressure points

- Technical features
- 16 cm front zip
 - Flatlock seams
 - Silicone gripper on bottom leg
 - Reflective elements to increase visibility to keep you safe

001 black





LINE VELOCE

Technical line with a colored and dynamic design,
suitable for most of the riders.

A technical, breathable and quality fabric,
comfortable pads, advanced technical solutions,
anatomical fitting, even if not extreme.

WOMAN

365
2020



Passione

BL44701

Long-sleeved jersey

001 black

Size

XS—XL

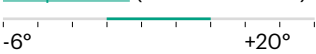
Breathability



Elasticity



Temperature (from +3° to +14°)



Fabric

- Lombardia thermal fabric
- Soft brushed inner fabric

Technical features

- YKK® Vislon zipper with wind flap
- Three open cargo pockets
- Elastic fleece cuffs
- Silicone gripper at bottom keeps the jersey in place
- Reflective elements to increase visibility to keep you safe







LINE CORSA

Entry line with some technical attributes, but it gives priority to comfort, harmonious design and a classical, timeless style.

It's suitable both for intensive trainings and Sunday rides.



WOMAN

365
2020

Logique

BL44686

Long-sleeved jersey

001 black

Size

XS—XL

Breathability

Temperature (from +6° to +18°)

-6° +20°

Elasticity

Fabric

- Galibier Comfortable thermal fabric
- Soft brushed inner fabric
- Elastic fleece on bottom jersey to ensure excellent fitting
- Total UPF protection (50+)

Technical features

- YKK® covered zipper with wind flap
- Three open cargo pockets
- Silicone gripper at bottom keeps the jersey in place
- Elastic fleece cuffs
- Reflective elements to increase visibility to keep you safe



027 turquoise



Logique

BL44667

Windproof vest

009 fluo yellow

Size

XS—XL

Breathability

Temperature (from +10° to +23°)

Windproof

Fabric

- Piumi fabric 45gr/m²
- Water repellent and windproof fabric in the front
- Breathable back, thanks to a micro mesh panel

Technical features

- Full front zipper with wind flap
- Lycra® tape at the bottom
- Reflective elements to increase visibility to keep you safe
- It can be stored in the jersey pocket
- Water-resistant lower portion to protect from tire-spray on wet roads



002 white



Logique

BL44666

Windproof jacket

Size

XS—XL

Elasticity

Fabric

- Piumi fabric 45gr/m²
- Water repellent and windproof fabric

Breathability

Temperature (from +6° to +18°)

-6° +20°

Technical features

- Full front zipper with wind flap
- Lycra® tape at the bottom
- Reflective elements to increase visibility to keep you safe
- It can be stored in the jersey pocket

009 fluo yellow



002 white





LINE ***ACCESSORIES***





ACCESSORIES

**365
2020**

Iron

BL44836
Short-sleeved jersey

- Sizes
XS/S, M/L, XL/XXL
- Features
- Seamless technology
 - High breathability
 - Anatomical shape
 - Quick drying
 - Optimal moisture transfer
 - Second skin underwear

002 white



Iron

BL44837
Sleeveless jersey

- Sizes
XS/S, M/L, XL/XXL
- Features
- Seamless technology
 - High breathability
 - Anatomical shape
 - Quick drying
 - Optimal moisture transfer
 - Second skin underwear

002 white



Trama

BL44040
Short-sleeved jersey

- Sizes
XS/S, M/L, XL/XXL
- Features
- Seamless technology
 - Quick drying
 - Minimal thickness
 - High breathability
 - Mesh construction

002 white



Trama

BL44041
Sleeveless jersey

- Sizes
XS/S, M/L, XL/XXL
- Features
- Seamless technology
 - Quick drying
 - Minimal thickness
 - High breathability
 - Mesh construction

002 white



Segreto

Shorts

Sizes

XS/S, M/L, XL/XXL

Features

- Quick drying
- Minimal thickness
- High breathability
- Seamless technology

BL44751 001

Power Plus (p. 188)
Man



BL44752 001

Power Plus (p. 188)
Woman



001 black



BL44047 001

Fast (p. 189)
Unisex



Serra

BL44748
Neck warmer

Sizes

One size

Features

- Extremely elastic and comfortable
- To wear under the helmet
- Optimal moisture transfer
- Multipurpose

009 fluo yellow



014 fuchsia



001 black / anthracite



Normandia

BL44565
Arm warmers

Sizes
XS—XXL

- Features
- Superroubaix DWR fabric water-resistant with no compromise to warmth or breathability
 - Outstanding elasticity to hug body tightly
 - Great in all conditions
 - Gripper elastic on top edge
 - Reflective inserts on side

001 black



Normandia

BL44566
Leg warmers

Sizes
XS—XXL

- Features
- Superroubaix DWR fabric water-resistant with no compromise to warmth or breathability
 - Outstanding elasticity to hug body tightly
 - Great in all conditions
 - Gripper elastic on top edge
 - Reflective inserts on side

001 black



Normandia

BL44567
Knee warmers

Sizes
XS—XXL

- Features
- Superroubaix DWR fabric water-resistant with no compromise to warmth or breathability
 - Outstanding elasticity to hug body tightly
 - Great in all conditions
 - Gripper elastic on top edge
 - Reflective inserts on side

001 black



Fiandre

BL44656
Arm warmers

Sizes
XS—XXL

- Features
- Excellent wicking properties
 - Miti Full Black Endurance fabric
 - Great thermal protection
 - Total UPF protection (+50)
 - Active compression
 - Silicon elastic gripper
 - Great elasticity
 - Reflective elements

001 black



Fiandre

BL44657
Leg warmers

Sizes
XS—XXL

- Features
- Excellent wicking properties
 - Miti Full Black Endurance fabric
 - Great thermal protection
 - Total UPF protection (+50)
 - Active compression
 - Silicon elastic gripper on both sides
 - Great elasticity
 - Reflective elements

001 black



Fiandre

BL44658
Knee warmers

Sizes
XS—XXL

- Features
- Excellent wicking properties
 - Miti Full Black Endurance fabric
 - Great thermal protection
 - Total UPF protection (+50)
 - Active compression
 - Silicon elastic gripper on both sides
 - Great elasticity
 - Reflective elements

001 black



Bretagna

BL44672
Arm warmers

Sizes
XS—XXL

Features

- Excellent wicking properties
- Mititech Thermal fabric
- Great thermal protection
- Total UPF protection (+50)
- Active compression
- Silicon elastic gripper
- Great elasticity
- Flatlock seams
- Reflective elements

053 black /
fluo yellow



001 black



TIR H

BL44870

Technical bib with pocket

001 black

Sizes

S-M, L-XL, XXL

Elasticity

Possible uses of TIR-H

- MTB / E - BIKE and Gravel use
- MTB / city bike use to go to work or for a non-demanding bike trip with non-technical clothing
- Cross-country skiing, such as an elastic bib and an object holder during sports without interfering with the wide movement of the skier.
- Alpine skiing, always as a bib to support the trousers and as a container for documents and more.
- Mountain walks, snowshoeing, ski roll, etc.
- Even more

Technical features

- Particularly elastic fabric, comfortable to use, breathable and durable.
- The TIR H pocket is removable and can be positioned at the front or back according to your needs
- The size of the pocket is 20 cm wide and 16.5 cm high with the possibility to increase the load capacity in the depth.
- The pocket is closed by a Velcro tab and allows a quick opening even with one hand if the pocket is positioned in the front of the TIR H.
- The pocket is made of a waterproof material, the objects inside the pocket will be preserved in case of light or medium rain and also from body perspiration. We suggest however to be careful in case of rain and to make sure that the velcro tab is well closed.
- There are the logos BL and TIR H in reflective material that increase the visibility of the product in low light conditions.
- The fixing clips on the trousers are made of highly resistant Pom material. It's easy to use them

on different models of trousers/baggy shorts and they guarantee excellent grip during demanding outings.

- To preserve the integrity of the fabric of the bibs and the functionality of the various plastic parts such as closures and clips, it is better to leave clips and length adjusters open when the product is not in use.
- We recommend washing the product in warm water up to 30 ° by hand and using mild detergents. We do not recommend washing in the washing machine because the plastic parts could be damaged during the washing cycles. During washing, the pocket would remain better closed to prevent the Velcro from damaging the fabric of the bib or other items washed together.
- Our TIR H bibs are adjustable, we decided to create a 3 sizes, for each size we considered an excursion of about 15 cm. To identify the exact size of the TIR H it is advisable to wear a pair of trousers (those you want to wear with bibs) and measure the distance between the upper edge of the trouser front waist and the back one, passing a seamstress over the shoulder.

[See the size chart \(p. 191\)](#)



LINE **FALL WINTER**





**FALL
WINTER
2020**



LINE REKORD

A line studied for the most demanding riders.
Performing materials, a very anatomical fitting,
advanced technical solutions, a minimal weight and
a great aerodynamics.



MAN
FALL
WINTER
2020

Normandia

BL44690

Thermal jacket

001 black

Size
S—XXXL

Breathability

Elasticity

Temperature (from -6° to +10°)
-6° _____ +20°

- Fabric
- Windtex fabric 295 gr/m²
 - Waterproof and windproof membrane
 - Waterproofness: ≥ 10.000 mm
 - Breathability (Ret): ≤20/m²Pa/W
 - Warm, elastic and comfortable fabric
 - Soft brushed inner fabric

- Technical features
- YKK® Vislon zipper with wind flap
 - Three open cargo pockets and one zipped
 - Silicone gripper at bottom keeps the jacket in place
 - Elastic fleece cuffs
 - Reflective elements to increase visibility to keep you safe
 - High Fleece lined collar



009 fluo yellow



Normandia

BL44559 Bib tights

Size
S-XXXL

Breathability

Elasticity

Temperature (from -2° to +12°)

- Fabric
- Superroubaix DWR M, water repellent fabric
 - Total UPF protection (50+)
 - Soft brushed inner fabric
 - Breathable mesh bibs

- Falcon Gel pad (p. 188)
- Carving System Technology provides lightness and breathability - thanks to the absence of the bonding film between the foams - and extremely elasticity.
 - Fabric: Touch
 - Different foam thicknesses with Rooted Gel supporting main key pressure points

- and efficiently reducing micro vibrations
- Density: 90 Kg/m³ + rooted gel (perineal insert)
 - Medium/long distances: more than 5 hours

- Technical features
- 16 cm front zip
 - Zip up ankle openings
 - Flatlock seams
 - Silicone gripper on bottom leg
 - Reflective elements to increase visibility to keep you safe

001 black



Normandia

BL44568 Windproof bib tights

Size
S-XXXL

Breathability

Elasticity

Temperature (from -6° to +10°)

- Fabric
- Superroubaix DWR M, water repellent fabric
 - Windtex fabric on the front panel with windproof and waterproof membrane
 - Total UPF protection (50+)
 - Soft brushed inner fabric
 - Breathable mesh bibs

- Falcon Gel pad (p. 188)
- Carving System Technology provides lightness and breathability - thanks to the absence of the bonding film between the foams - and extremely elasticity
 - Fabric: Touch
 - Different foam thicknesses

- with Rooted Gel supporting main key pressure points and efficiently reducing micro vibrations
- Density: 90 Kg/m³ + rooted gel (perineal insert)
 - Medium/long distances: more than 5 hours

- Technical features
- 16 cm front zip
 - Zip up ankle openings
 - Flatlock seams
 - Silicone gripper on bottom leg
 - Reflective elements to increase visibility
 - Maximum insulation from the cold

001 black





LINE VELOCE

Technical line with a colored and dynamic design,
suitable for most of the riders.

A technical, breathable and quality fabric,
comfortable pads, advanced technical solutions,
anatomical fitting, even if not extreme.



MAN
FALL
WINTER
2020

3.0

BL44867

Thermal jacket

Size
S—XXXL

Elasticity

Breathability

Temperature (from -2° to +12°)
-6° +20°

- Fabric
- Windtex Shield fabric 220 gr/m²
 - Windproof membrane
 - Breathability (Ret): ≤20/m²Pa/W
 - Warm, elastic and comfortable fabric
 - Soft brushed inner fabric

- Technical features
- YKK® Vislon zipper with wind flap
 - Three cargo opened pockets and one zipped
 - Silicone gripper at bottom keeps the jacket in place
 - Elastic fleece cuffs
 - Reflective elements to increase visibility to keep you safe
 - High Fleece lined collar

003 red



009 fluo yellow



012 anthracite



Bretagna

BL44670

Bib tights

Size
S—XXXL

Elasticity

Breathability

Temperature (from +3° to +14°)
-6° +20°

Fabric

- Lombardia thermal fabric
- Soft brushed inner fabric
- Total UPF protection (50+)
- Breathable mesh bibs

Road Performance Space pad (p. 187)

- It has an innovative structure featuring a multidirectional curvature that delivers perfect fit and great stability in saddle
- HCS (Hybrid Cell System). This system enable to get a pad significantly thinner and lighter than gel, and also radically more

- breathable and resistant to wear and tear
- Fabric: Eit Carbonium Flash
- Density: 200kg/m³ (perineal insert)
- Extra-long distances: more than 7 hours

Technical features

- Zip up ankle openings
- Flatlock seams
- Silicone gripper on bottom leg
- Reflective elements to increase visibility to keep you safe

001 black



053 black / fluo yellow



058 black / red





LINE CORSA

Entry line with some technical attributes, but it gives priority to comfort, harmonious design and a classical, timeless style.

It's suitable both for intensive trainings and Sunday rides.



MAN
FALL
WINTER
2020

Fiandre

BL44702

Thermal jacket

Size
S—XXXL

Elasticity

Breathability

Temperature (from +3° to +14°)

-6° +20°

Fabric

- Windtex Shield fabric 220 gr/m²
- Windproof membrane
- Water repellent treatment
- Breathability (Ret): ≤20/m²Pa/W
- Warm, elastic and comfortable fabric
- Thermal fabric on the back and side panels

Technical features

- YKK® Vislon zipper with wind flap
- Three open cargo pockets
- Silicone gripper at bottom keeps the jacket in place
- Elastic fleece cuffs
- Reflective elements to increase visibility to keep you safe
- High Fleece lined collar

001 black



030 blue avio



003 red





Fiandre

BL44651 Bib tights

Size
S—XXXL

Elasticity

Breathability

Temperature (from +3° to +14°)

- Fabric
- Lombardia thermal fabric
 - Soft brushed inner fabric
 - Total UPF protection (50+)
 - Breathable mesh bibs

- Power Plus pad (p. 188)
- Carving System Technology provides lightness and breathability - thanks to the absence of the bonding film between the foams - and extremely elasticity.
 - Fabric: Elite
 - Density: 90 Kg/m³ (perineal insert)
 - Medium distances: more than 3 hours

- Technical features
- Silicone gripper on bottom leg
 - Reflective elements to increase visibility to keep you safe

001 black



Fiandre

BL44653 Windproof bib tights

Size
S—XXXL

Elasticity

Breathability

Temperature (from -6° to +10°)

- Fabric
- Lombardia thermal fabric on the back
 - Windproof fabric on the front
 - Soft brushed inner fabric
 - Total UPF protection (50+)

- Power Plus pad (p. 188)
- Carving System Technology provides lightness and breathability - thanks to the absence of the bonding film between the foams - and extremely elasticity.
 - Fabric: Elite
 - Density: 90 Kg/m³ (perineal insert)

- Medium distances: more than 3 hours
- Technical features
- 16 cm front zip
 - Silicone gripper on bottom leg
 - Reflective elements to increase visibility to keep you safe

001 black



Fiandre

BL44652 Tights

Size
S—XXXL

Elasticity

Breathability

Temperature (from -6° to +10°)
_____ -6° +20°

- Fabric
- Lombardia thermal fabric
 - Soft brushed inner fabric
 - Total UPF protection (50+)

- Power Plus pad (p. 188)
- Carving System Technology provides lightness and breathability - thanks to the absence of the bonding film between the foams - and extremely elasticity.
 - Fabric: Elite
 - Density: 90 Kg/m³ (perineal insert)
Medium distances: more than 3 hours

- Technical features
- Silicone gripper on bottom leg
 - Elastic waistband
 - Reflective elements to increase visibility to keep you safe

001 black



Fiandre

BL44655 Bib tights without pad

Size
S—XXXL

Elasticity

Breathability

Temperature (from +3° to +14°)
_____ -6° +20°

- Fabric
- Lombardia thermal fabric
 - Soft brushed inner fabric
 - Total UPF protection (50+)

- Technical features
- Silicone gripper on bottom leg
 - Reflective elements to increase visibility to keep you safe

001 black





LINE REKORD

A line studied for the most demanding riders.
Performing materials, a very anatomical fitting,
advanced technical solutions, a minimal weight and
a great aerodynamics.



WOMAN

FALL
WINTER
2020

Normandia

BL44710

Thermal jacket

001 black

Size

XS—XL

Breathability

Temperature (from -6° to +10°)

-6° +20°

Elasticity

Fabric

- Windtex fabric 295 gr/m²
- Waterproof and windproof membrane
- Waterproofness: ≥ 10.000 mm
- Breathability (Ret): $\leq 18/m^2Pa/W$
- Warm, elastic and comfortable fabric
- Soft brushed inner fabric

Technical features

- YKK® Vislon zipper with wind flap
- Three open cargo pockets and one zipped
- Silicone gripper at bottom keeps the jacket in place
- Elastic fleece cuffs
- Reflective elements to increase visibility to keep you safe
- High Fleece lined collar



027 turquoise



Normandia

BL44562

Bib tights

001 black

Size

XS—XL

Breathability

Elasticity

Temperature (from -2° to +12°)

-6° +20°

Fabric

- Superroubaix DWR M, water repellent fabric
- Total UPF protection (50+)
- Soft brushed inner fabric
- Breathable mesh bibs

- and efficiently reducing micro vibrations
- Density: 90 Kg/m³ + rooted gel (perineal insert)
- Medium/long distances: more than 5 hours

Falcon Gel pad (p. 188)

- Carving System Technology provides lightness and breathability - thanks to the absence of the bonding film between the foams - and extremely elasticity
- Fabric: Touch
- Different foam thicknesses with Rooted Gel supporting main key pressure points

Technical features

- 16 cm front zip
- Zip up ankle openings
- Flatlock seams
- Silicone gripper on bottom leg
- Reflective elements to increase visibility to keep you safe



Normandia

BL44569

Windproof bib tights

001 black

Size

XS—XL

Breathability

Temperature (from -6° to +10°)

Elasticity

Fabric

- Superroubaix DWR M, water repellent fabric
- Windtex fabric on the front panel with windproof and waterproof membrane
- Total UPF protection (50+)
- Soft brushed inner fabric
- Breathable mesh bibs

- Different foam thicknesses with Rooted Gel supporting main key pressure points and efficiently reducing micro vibrations
- Density: 90 Kg/m³ + rooted gel (perineal insert)
- Medium/long distances: more than 5 hours

Falcon Gel pad (p. 188)

- Carving System Technology provides lightness and breathability - thanks to the absence of the bonding film between the foams - and extremely elasticity
- Fabric: Touch

Technical features

- 16 cm front zip
- Zip up ankle openings
- Flatlock seams
- Silicone gripper on bottom leg
- Reflective elements to increase visibility to keep you safe
- Maximum insulation from the cold
- Maximum freedom of movement



Normandia

BL44708

Tights

001 black

Size

XS—XL

Elasticity

Fabric

- Superroubaix DWR fabric water repellency
- Total UPF protection (+50)
- Soft brushed inner fabric

Power Plus pad (p. 188)

- Carving System Technology provides lightness and breathability - thanks to the absence of the bonding film between the foams - and extremely elasticity
- Materials: Touch + Focus Carving System Technology
- Different foam thicknesses with Rooted Gel supporting

Breathability

Temperature (from -2° to +12°)

-6° +20°

- main key pressure points and efficiently reducing micro vibrations
- Foam thickness A: Comfort Evo Foam (+/- D90KG/MThree)
 - Foam thickness B: Comfort Foam (+/- D65KG/MThree)
 - Medium/long distances: more than 5 hours

Technical features

- Flatlock seams
- Zip up ankle openings
- Silicone injected gripper on bottom leg
- Reflective elements to increase visibility to keep you safe





LINE VELOCE

Technical line with a colored and dynamic design,
suitable for most of the riders.

A technical, breathable and quality fabric,
comfortable pads, advanced technical solutions,
anatomical fitting, even if not extreme.



WOMAN

FALL
WINTER
2020

Passione

BL44700

Thermal jacket

Size

XS—XL

Elasticity

Fabric

- Windtex Shield fabric 220 gr/m²
- Windproof membrane
- Water repellent treatment
- Breathability (Ret): ≤20/m²Pa/W
- Warm, elastic and comfortable fabric
- Soft brushed inner fabric

Breathability

Temperature (from -2° to +12°)

-6° +20°

Technical features

- YKK® Vislon zipper with wind flap
- One front chest zipped pocket
- Three open cargo pockets
- Silicone gripper at bottom keeps the jacket in place
- Elastic fleece cuffs
- Reflective elements to increase visibility to keep you safe
- High Fleece lined collar

001 black



003 red



BL44709

Tights

001 black

Size

XS—XL

Elasticity

Fabric

- Lombardia thermal fabric
- Soft brushed inner fabric
- Total UPF protection (50+)
- Comfortable waist elastic band construction

Road Performance Space pad (p. 187)

- It has an innovative structure featuring a multidirectional curvature that delivers perfect fit and great stability in saddle
- HCS (Hybrid Cell System). This system enable to get a pad significantly thinner and lighter than gel, and also radically more

Breathability

Temperature (from +3° to +14°)

-6° +20°

- breathable and resistant to wear and tear
- Fabric: Eit Carbonium Flash
- Density: 200kg/m³ (perineal insert)
- Extra-long distances: more than 7 hours

Technical features

- Zip up ankle openings
- Flatlock seams
- Silicone gripper on bottom leg
- Reflective elements to increase visibility to keep you safe





LINE CORSA

Entry line with some technical attributes, but it gives priority to comfort, harmonious design and a classical, timeless style.

It's suitable both for intensive trainings and Sunday rides.



WOMAN

FALL
WINTER
2020

Size

XS—XL

Breathability

Temperature (from +3° to +14°)

-6° +20°

Elasticity

Fabric

- Windtex Shield fabric 300 gr/m²
- Windproof membrane
- Water repellent treatment
- Breathability (Ret): ≤20/m²Pa/W
- Warm, elastic and comfortable fabric
- Soft brushed inner fabric
- Thermal fabric on the back and side panels

Technical features

- YKK® Vislon zipper with wind flap
- Three open cargo pockets plus one zipped
- Silicone gripper at bottom keeps the jacket in place
- Elastic fleece cuffs
- Reflective elements to increase visibility to keep you safe
- High Fleece lined collar



001 black





Logique

BL44660 Bib tights

Size
XS—XL

Elasticity

Breathability

Temperature (from +3° to +14°)
-6° _____ +20°

- Fabric
- Lombardia thermal fabric
 - Soft brushed inner fabric
 - Total UPF protection (50+)
 - Breathable mesh bibs

- Power Plus pad (p. 185)
- Carving System Technology provides lightness and breathability - thanks to the absence of the bonding film between the foams - and extremely elasticity.
 - Fabric: Elite
 - Density: 90 Kg/m³ (perineal insert)

- Medium distances: more than 3 hours
- Technical features
- Silicone gripper on bottom leg
 - Reflective elements to increase visibility to keep you safe

001 black



Logique

BL44661 Windproof tights

Size
XS—XL

Elasticity

Breathability

Temperature (from +3° to +14°)
-6° _____ +20°

- Fabric
- Lombardia thermal fabric on the back
 - Windproof fabric on the front
 - Soft brushed inner fabric
 - Total UPF protection (50+)

- Power Plus pad (p. 185)
- Carving System Technology provides lightness and breathability - thanks to the absence of the bonding film between the foams - and extremely elasticity.
 - Fabric: Elite

- Density: 90 Kg/m³ (perineal insert)
- Medium distances: more than 3 hours

- Technical features
- 16 cm front zip
 - Silicone gripper on bottom leg
 - Reflective elements to increase visibility to keep you safe

001 black



Logique

BL44659

Tights

Size

XS—XL

Breathability

Temperature (from +3° to +14°)

-6° +20°

Elasticity

Fabric

- Lombardia thermal fabric
- Soft brushed inner fabric
- Total UPF protection (50+)

- Medium distances: more than 3 hours

Technical features

Power Plus pad (p. 185)

- Carving System Technology provides lightness and breathability - thanks to the absence of the bonding film between the foams - and extremely elasticity.
- Fabric: Elite
- Density: 90 Kg/m³ (perineal insert)

- Silicone gripper on bottom leg
- Elastic waistband
- Reflective elements to increase visibility to keep you safe

001 black





LINE **ACCESSORIES**

ACCESSORIES

**FALL
WINTER
2020**



Brusson

BL43094
Long-sleeved jersey

Sizes
XS—XXL

- Features
- High breathability
 - Flatlock seams
 - Quick drying
 - Anti-bacterial effect

001 black



Brusson

BL43095
Long-sleeved jersey windproof

Sizes
XS—XXL

- Features
- High breathability
 - Flatlock seams
 - Quick drying
 - Anti-bacterial effect
 - The structure is designed to optimize the functionality of the garment thanks to a polyurethane film that provides high windproof properties on the front

001 black



Brusson

BL43096
Short-sleeved jersey windproof

Sizes
XS—XXL

- Features
- High breathability
 - Flatlock seams
 - Quick drying
 - Anti-bacterial effect

001 black



Traccia

BL44679
Man socks

Sizes
S (38—40), M (41—43),
L (44—46)

- Features
- Cuff 16 cm
 - Winter season

- Technicity
- High-quality Merinos wool
 - Elastic cuff
 - Socks with elastic fibers to keep the foot stable
 - Imperceptible toe seams

053 black /
fluo yellow



058 black / red



083 black /
light blue



001 black / anthracite



Carovana

BL44680
Man socks

Sizes
S (38—40), M (41—43),
L (44—46)

- Features
- Cuff 16 cm
 - Winter season

- Technicity
- High-quality Merinos wool
 - Elastic cuff
 - Socks with elastic fibers to keep the foot stable
 - Imperceptible toe seams

058 black / red



012 anthracite /
silver



001 black / anthracite



Esperienza

BL44678
Woman socks

Sizes

XS (35—37), S (38—40),
M (41—43)

Features

- Cuff 12 cm
- Winter season

Technicity

- High-quality Merinos wool
- Elastic cuff
- Socks with elastic fibers to keep the foot stable
- Imperceptible toe seams

052 black / fuchsia

078 black / turquoise



001 black



Iridato

BL44715
Man gloves

Sizes

S—XXL

Features

- No slip reinforced palm for an excellent grip
- Adjustable cuff strap
- Shock absorbing gel padding
- Tight fit

001 black



053 black / fluo yellow



Alpha

BL44480
Man gloves

[Sizes](#)
S—XXL

[Features](#)

- Totally waterproof, breathable and windproof
- Brushed Polyester lining
- No slip reinforced palm for an excellent grip
- Reflective elements to keep you visible at all times
- Tight fitting with good wrist mobility
- Adjustable velcro closure
- Absorbent material on thumb for wiping away perspiration

001 black



Abbaglio

BL44716
Man gloves

[Sizes](#)
S—XXL

[Features](#)

- No slip reinforced palm for an excellent grip
- Wrist mit termical and elastic material
- Reflective elements to keep you visible at all times
- Tight fit

034 silver reflex



Facile

BL44171
Man gloves

Sizes
S—XXL

- Features
- No slip reinforced palm for an excellent grip
 - Tight fit
 - Taped seams
 - Great elasticity

001 black



Pista

BL44726
Skull cap

Sizes
S/M, L/XL

- Features
- Soft brushed inner fabric.
 - Cold and sweat protection
 - Very elastic material and high breathability
 - Wind protection
 - High breathability
 - To wear under the helmet
 - Reflective elements
 - Anatomical shape

001 black



Manche

BL44722
Mask

Sizes
One size

- Features
- Soft brushed inner fabric for increased warmth on cool days
 - Very elastic material
 - Wind and cold protection
 - High breathability
 - Nose and mouth openings
 - Velcro clousure
 - Anatomical shape

001 black



Scia

BL44747
Skull cap

Sizes
One size

- Features
- Soft brushed inner fabric for increased warmth on cool days
 - Wind protection
 - High breathability
 - Very elastic material
 - To wear under the helmet
 - Cold and sweat protection

001 black



Tornante

BL44724

Skull cap

Sizes

S/M, L/XL

Features

- Soft brushed inner fabric for increased warmth on cool days
- Very elastic material
- High breathability
- Flatlock seams
- To wear under the helmet
- Cold and sweat protection
- Anatomical shape

009 fluo yellow



001 black



Gara

BL44725

Balaclava

Sizes

S/M, L/XL

Features

- Soft brushed inner fabric for increased warmth on cool days
- High breathability
- Flatlock seams
- Very elastic material
- To wear under the helmet
- Neck length suitable for cycling

009 fluo yellow



001 black



Vittoria

BL44723
Headband

Sizes
S/M, L/XL

- Features
- Wind protection
 - High breathability
 - Very elastic material
 - Flatlock seams
 - Reflective elements
 - To wear under the helmet
 - Cold and sweat protection
 - Anatomical shape

009 fluo yellow



001 black



Atmosfera

BL44746
Shoe covers

Sizes
S (36—38), M (39—40),
L (41—42), XL (43—44),
XXL (45—46)

- Features
- Waterproof fabric
 - Excellent elasticity
 - Zip with inner zip cover
 - Reflective elements
 - Anatomical shape

001 black



Impresa

BL44741
Shoe covers

Sizes
S (36—38), M (39—40),
L (41—42), XL (43—44),
XXL (45—46)

- Features
- Waterproof fabric
 - Excellent elasticity
 - Zip with inner zip cover
 - Reflective elements
 - Anatomical shape

001 black



Londra

BL44174
Shoe covers

Sizes

XS/S (36—39), M/L (40—43),
XL/XXL (44—46)

Features

- Reflex inserts for better visibility
- Velcro closure anti rayure
- Great elasticity
- Two holes for the heels and cleats
- Fabric neoprene

001 black



Axel

BL44076
Toe covers

Sizes

S/M (36—39), L/XL (41—44),
XXL (45—46)

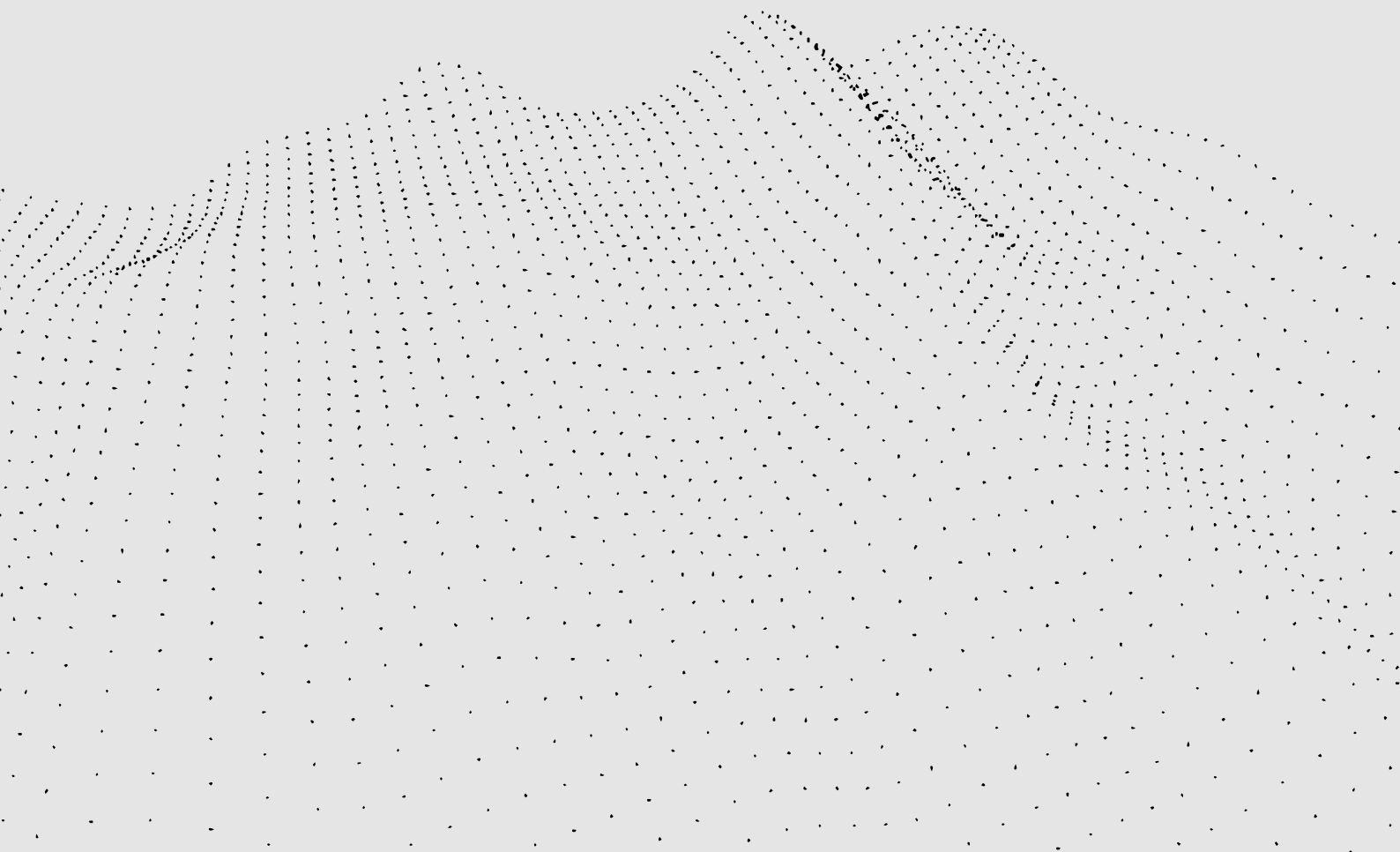
Features

- High breathability
- Easy to put
- Elastic performance
- Fabric Windtex Shield

001 black



LINE **TECHNOLOGIE**



Technology Pads

The saddle represents the biggest contact and friction point between the cyclist and the mechanical medium. For this reason, the pad plays a fundamental role in the construction of the shorts, to provide protection, support, stability, comfort and fit. BL uses different types of chamois that adapt to different conformations, uses and situations.

Ergonomics

Of vital importance are the positioning of the different densities and thicknesses according accurate anthropometric parameters and a design that allows the chamois to adapt to the anatomy of the cyclist.

Alliviating perineal area

Differentiated densities to protect and uphold differently parts of the body with different characteristics.

Road Performance Space Man/Woman

Producer
Cytech

Technology

Long distance pad featuring different foam combinations and varied densities, delivering superior perineal support and increasing protection along the pelvic track. Seamless structure for best comfort. This construction allows for best protection and flexibility with a slim profile and greater stability in saddle.

Man products

- Comando (p. 10)
- Squadra (p. 28)
- Bretagna (p. 109, 153)

Woman products

- Volata (p. 48)
- Passione (p. 167)



Technology Pads

Falcon Gel Man/Woman

Producer
Berenis

Technology

Designed for long distance riders on road or mtb to offer maximum performance in terms of protection, support and comfort. With perforated and rooted gel in ischial and perineal area, for a better support on the pressure points, this pad also features perforated gel and a very soft microfiber upper fabric, good elasticity, high breathability, soft touch and quick drying. Minimal volume construction technology thanks to the Carving System and pre-molded wings offers excellent comfort during pedaling.

Man products

- Zoncolan RS (p.11)
- Treviso (p. 15)
- Pro (p. 17)
- Aero 2.0 (p. 19)
- Anima S (p. 28)
- Normandia (p. 103, 149)

Woman products

- Aero 2.0 (p. 55)
- Potenza (p. 62)
- Normandia (p. 105, 125, 164, 162)



Power Plus Man/Woman

Producer
Berenis

Technology

Design to offer best results on protection, support and comfort on road bike and mtb during medium distances. Made using high quality microfiber fabric, with antibacterial properties and great elasticity, this pad is also incredibly soft to the touch and breathable.

- Elastic, it follows pedalling movements
- Anti-bacterial protection
- Optimal moisture transfer
- Ideal both on the road and on a mountain bike

Man products

- Liegi (p. 29–30)
- Passo (p. 31)
- Segreto (p. 138)
- Fiandre (p. 117, 158, 159)

Woman products

- Freccia (p. 62–63)
- Emblema (p. 64)
- Logique (p. 173–174)
- Segreto (p. 139)
- Normandia (p. 165)



Technology **Pads**

Fast

Technology

Pad with medium density and padding. The external material offers complete anti-bacterial protection and optimal moisture transfer. Anatomical shape and bi-elasticity guarantee additional comfort.

Man products

— Segreto (p. 139)

Woman products

— Segreto (p. 139)



Brest Gel **Man/Woman**

Technology

Perforated foam with 3 mm openings to promote transpiration and the passage of air in the pad

Perineal area: open cell foams with 90 Kg / m³ density + antishock gel inserts

Long distances: more than 7 hours

Man products

— Universo (p. 20-21)
— Anima XP (p. 28-29)

Woman products

— Alyson (p. 48-49)
— Sole (p. 55)



Technology Pads

Superkid

Producer
Berenis

Technology
Design to offer best results on protection, support and comfort on road bike and mtb during medium distances. Made using high quality microfiber fabric, with antibacterial properties and great elasticity, this pad is also incredibly soft to the touch and breathable.

Kids products
— Sven (p. 78)
— Passo K (p. 79)



Technology

Fitting

Please note that these charts are indicative only. Sizes and measurements may vary according to physical structure and product fit. The fitting is tight and it's optimized for the road cycling position. The MTB items have a relax fitting, as explained in the specific descriptions. To follow, the description of the three types of fitting.

Comfort
Loose fit that allows maximum freedom of movement, suitable for off-road rides.


Action
Tight fit suitable for all cyclists who want to combine the technicality of the product with comfort.


Performance
Very tight fit suitable for cyclists who want to feel the garment like a second skin.

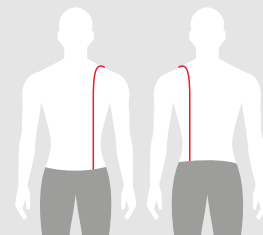
| Man | Sizes | Chest | Waist | Hips | Inseam |
|--|-------|-------|-------|------|--------|
|  | S | 94 | 80 | 94 | 82 |
| | M | 98 | 84 | 98 | 83 |
| | L | 102 | 88 | 102 | 84 |
| | XL | 106 | 93 | 107 | 85 |
| | XXL | 110 | 98 | 112 | 86 |
| | XXXL | 114 | 103 | 117 | 87 |

| Woman | Sizes | Chest | Waist | Hips | Inseam |
|---|-------|-------|-------|------|--------|
|  | XS | 80 | 64 | 88 | 75 |
| | S | 84 | 68 | 92 | 76 |
| | M | 88 | 72 | 96 | 77 |
| | L | 92 | 76 | 100 | 78 |
| | XL | 96 | 80 | 104 | 79 |

| Kids | Sizes | Height | Chest | Waist |
|---|-------|---------|-------|-------|
|  | 116 | 110-120 | 56-62 | 52-56 |
| | 128 | 120-140 | 62-68 | 56-60 |
| | 140 | 140-152 | 68-74 | 60-64 |
| | 152 | 152-164 | 74-80 | 64-70 |
| | 164 | 164-176 | 80-86 | 70-76 |

| Gloves | Sizes | Man | Woman |
|---|-------|-----------|-----------|
|  | XS | — | 16,2-17,5 |
| | S | 18,3-20,2 | 17,5-19 |
| | M | 20,2-22,2 | 19-20,5 |
| | L | 22,2-24,5 | 20,5-23 |
| | XL | 24,5-26 | — |
| | XXL | 26-28 | — |

| Socks | Sizes | Man | Woman |
|--|-------|-------|-------|
|  | XS | — | 35-37 |
| | S | 38-40 | 38-40 |
| | M | 41-43 | 41-43 |
| | L | 44-46 | — |

| TIR-H Bib | Sizes | Unisex |
|--|--------|---------|
|  | S / M | 80-95 |
| | L / XL | 95-110 |
| | XXL | 110-125 |

Distance between the upper edge of the trouser front waist and the back one

Bicycle Line Srl
Via F. Ferrara, 2-4
31030 Dosson di Casier,
Treviso, Italy

T +39 0422 490156
info@bicycle-line.com
bicycle-line.com

